

# ARS-685 TILT-UP ACCESS LADDER & ROOF SUPPORTS

## DESCRIPTION

Thaler ARS-685 Tilt-Up Ladder & Roof Supports consists of a bottom hinged aluminum ladder supported on two adjustable aluminum roof supports when in the upright 60° position, and on a third roof support in the horizontal storage position. A urethane insulated flashing available in aluminum, copper or stainless steel, with EPDM Base Seal, completes the assembly.

**Ladder Height and Width:** Height is variable to any specified dimensions up to 25'-0" or 30'-0" (7.6 m to 9.1 m) approximately. Standard rung width is 18" (457 mm).

**Prominent Features:** Super-easy to use; tilts up into service position using stainless steel hinge pin with top of ladder resting against wall or other surface and tilts down into horizontal storage position "hidden" from view. Non-corrosive, durable fabrication including insulated supports which are condensation free. Maintenance free (flashing never needs caulking). Threaded support leg assemblies provide up to 4" (102 mm) vertical adjustment for leveling if necessary. Ladder is easily separated from roof supports by removing the two cotter pins, for re-roofing, etc. if desired.

**Options:** Flashing material (see Thaler STACK JACK Flashing literature). PVC coated flashing deck flange for PVC roof membrane. Bituminous painted flashing deck flange for BUR and ModBit roof membrane.

## RECOMMENDED USE

Suitable for all flat roofs for access to penthouse and mechanical room roofs, the top of saw tooth roofs, high catwalks, chimneys, cooling towers and similar applications wherever occasional access is required for maintenance.

## WARRANTY

20 year warranty against leaks, condensation and defects in materials and/or manufacture when installed in accordance with Thaler "Installation Instructions". Copy of Warranty Certificate available upon request.

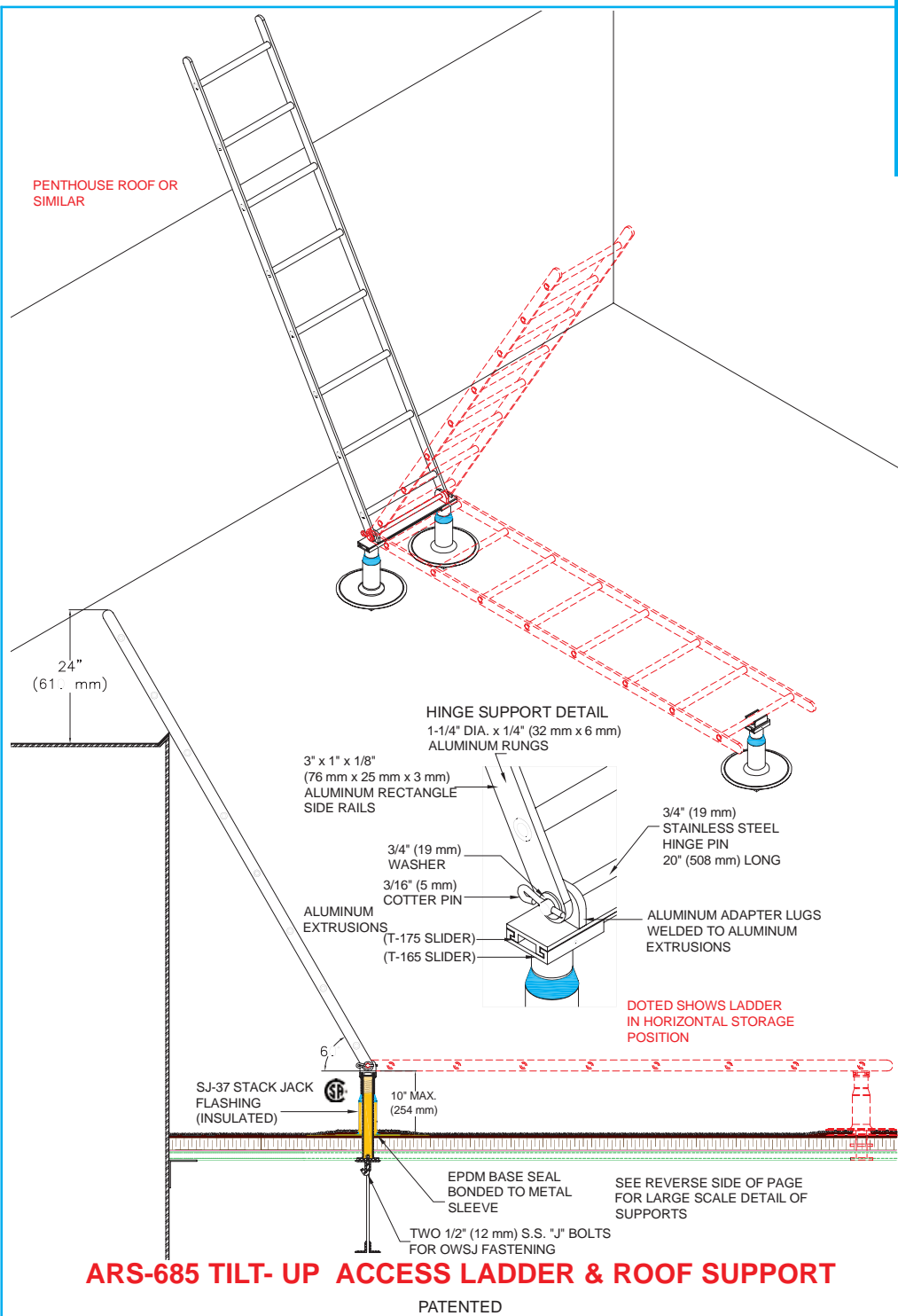
## MAINTENANCE

No maintenance required.

## SPECIFICATION (Short Form)

**Tilt-Up access ladder and roof supports:** Thaler ARS-685 mill finish 6061-T6 aluminum ladder [—] long] [of length as shown on the drawings], with 3" x 1" x 1/8" (76 mm x 25 mm x 3 mm) aluminum rectangle side rails, 1-1/4" (32 mm) dia tubular rungs 18" (457 mm) long of 1/4" (6 mm) wall thickness welded to side rails, and 3/4" (19 mm) dia. x 20" (508 mm) long s.s. hinge pin secured using two cotter pins; adjustable height hollow alum., urethane insulated supports with side rail adapter lugs, 2-1/2" (64 mm) dia., and with appropriate hardware (adhesive type fasteners supplied by others) for fastening to structural roof deck; [.064" (1.6 mm) mill finish 1100-OT aluminum] [.032" (0.831 mm) 24 oz. copper] [.031" (0.79 mm) 22 ga. Type 304 s.s.] [SJ-34, uninsulated] [SJ-37, insulated] flashing to CSA B272-93, with EPDM Triple Pressure Grommet Seal and EPDM Base Seal [and] [PVC coated deck flange] [bituminous painted deck flange]; manufactured by Thaler Metal Industries, 1-800-387-7217 (Mississauga, Ontario, Canada) or 1-800-576-1200 (New Braunfels, TX), installed as per manufacturer's written instructions.

Continued on reverse



## INSTALLATION:

"Installation Instructions" are provided with every Thaler product. Essentially, the Thaler ARS-685 Tilt-Up Ladder & Roof Supports are installed at the required location(s) by fastening each of the three roof support mounting plates to the structural roof deck, placing the flashing sleeve over the support and roof membrane, attaching the ladder using the stainless steel hinge pin and cotter pins, and as follows:

**BUR:** Set flashing deck flange in layer of plastic cement and flash in with 3 overlapping layers of felt flashing.

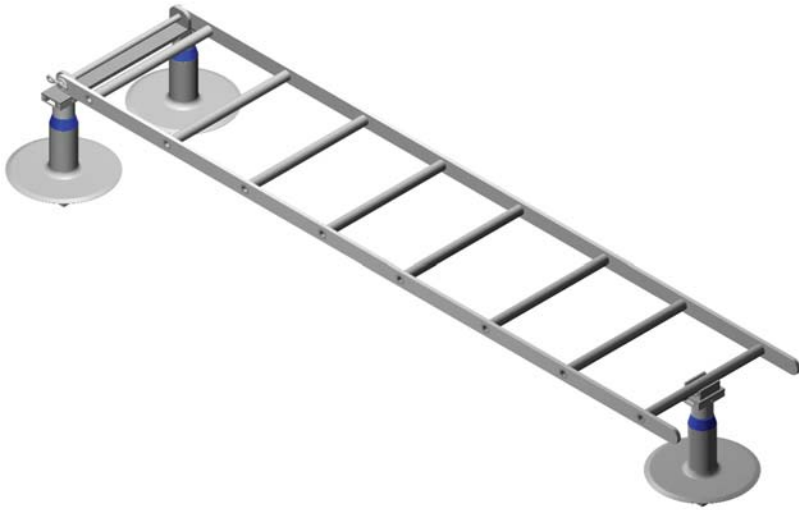
**ModBit:** Torch membrane until bitumen is fluid and set flashing deck flange into fluid. Flash in flange with two overlapping layers of ModBit and seal with asphalt sealer. Do not overheat (melt) EPDM Base Seal.

**Single Ply:** Set flashing deck flange in layer of membrane adhesive and extend single ply up sleeve to highest elevation possible and clamp membrane to STACK JACK Flashing. Note: for PVC membrane, specify PVC coated aluminum, etc. STACK JACK by adding the suffix P to model number, e.g. ARS-685-A-P; weld roofing deck flange using PVC torch.

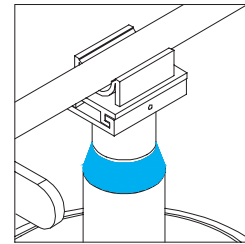
**Precautions:** Apply an asphaltic or other type protective coating to aluminum STACK JACK Flashing to a height of 2" (51 mm) above a limestone ballast to avoid corrosive reaction. Also, if coating deck flange with a bituminous paint on site, allow 24 hours for drying before applying roof membrane.

**Ladder Position:** Locate the two ladder roof supports so that a roughly 60° angle is created between the bottom of the ladder and the top portion of the ladder resting against the penthouse eave or other terminal point. Ensure adequate ladder length to provide 24" (610 mm) of ladder above the resting point e.g. eave, for safely getting off and on the top of the ladder. Locate third roof support to co-inside with top rung of ladder when in the horizontal storage position..

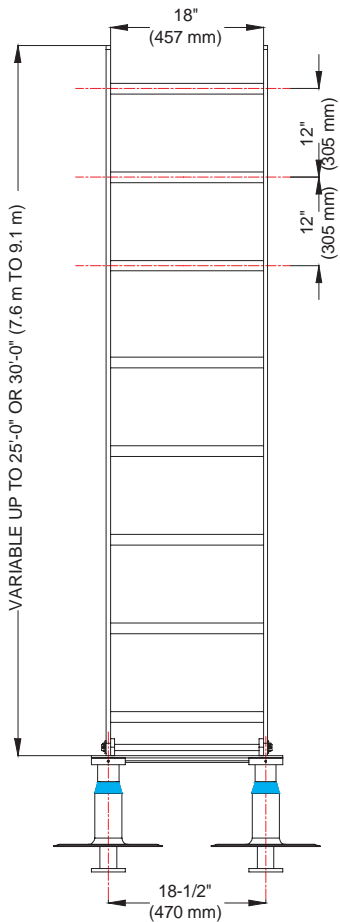
**Ordering:** Specify flashing material required by adding appropriate suffix to model number e.g. ARS-685-A, for aluminum, etc. Available throughout North America. Contact Thaler for list of distributors and current cost information. Most products are readily available from stock.



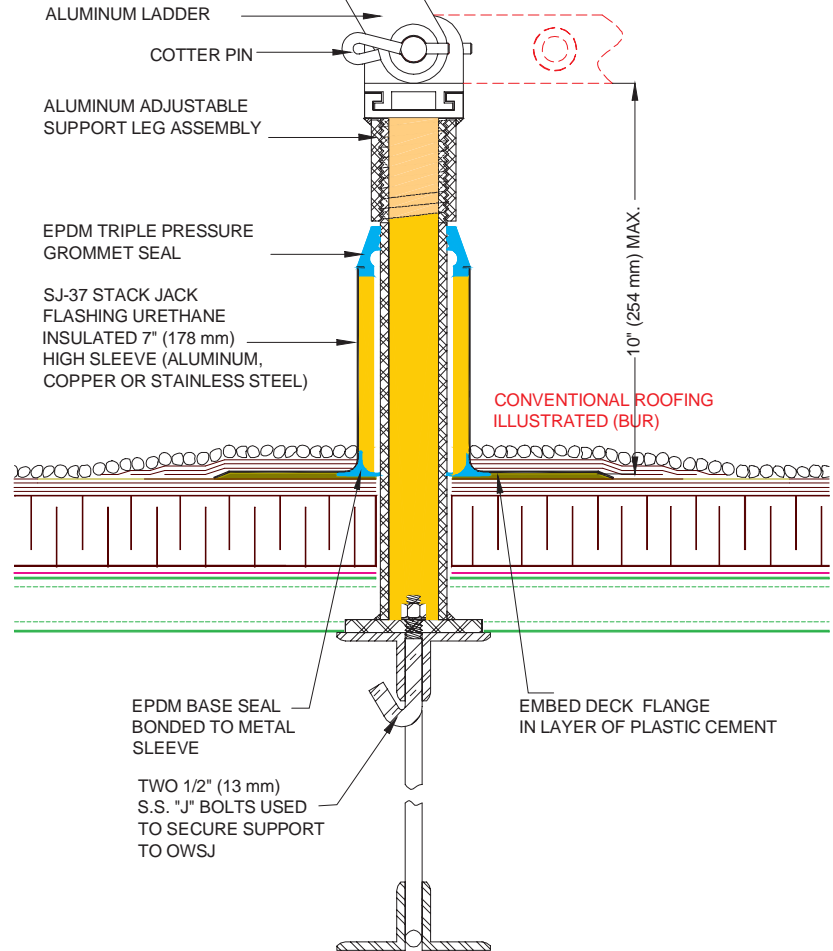
END RUNG RESTS  
IN ALUMINUM CRADLE  
WHEN IN STORAGE POSITION



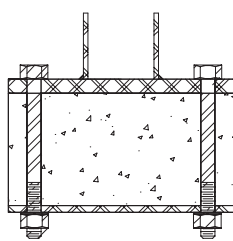
**STORAGE SUPPORT DETAIL**



**ELEVATION**

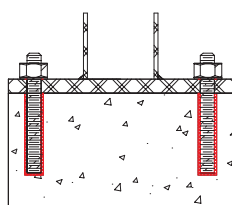


**ALTERNATIVE FASTENING METHODS**



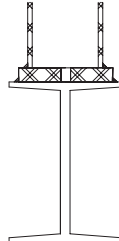
**T1**

Bolt Through Slab



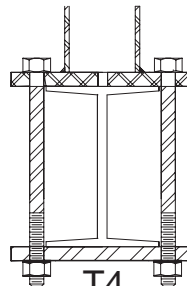
**T2**

Adhesive Bolts



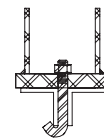
**T3**

Weldment



**T4**

Bolt Around Beam



**T5**

OWSJ J Bolt

Specify fastening method required by adding appropriate suffix to model number ( e.g. MERS-685-A-T5)