



ROOF SPECIALTY PRODUCTS & FALL PROTECTION SYSTEMS

Solution to ALL YOUR ROOFING NEEDS

ABOUT THALER METAL

The Thaler Metal Industries Limited story starts around 1969 when Ken Thaler, formerly the Chief Estimator/Supervisor with a large roofing company in the 1950's and 1960's, recognized the need for a higher quality of roofing specialty products such as flashings, vents, roof drains, and other roof protrusion products. The high incidence of roof leaks, maintenance and labour intensive roofing specialty products inspired Ken to design and promote a superior line of roofing accessories that continue to be unequalled today.

FLOURISHING AMID THE CHALLENGES OF THE ROOFING INDUSTRY

From the 1970's to the 2000's, Thaler developed, engineered and honed a multitude of roofing accessory products including mechanical and electrical protrusion flashings, roof supports (all disciplines), air vents, relief vents, suspended maintenance fall production safety anchors, davit arms and roof drains. All Thaler products have a number of "Value Added" features that should be considered when trying to equate the "Or Equal Factor".

FOR EXAMPLE, THE SINGLE MOST IMPORTANT DEVELOPMENT AT THE CENTRE OF THE COMPANY'S ACCOMPLISHMENTS – AN INDUSTRY FIRST – IS THE INVENTION, BY KEN THALER, OF UNIQUE PATENTED EPDM FLASHING SEALS FOR MECHANICAL AND ELECTRICAL ROOF PENETRATIONS. IN GENERAL, ALL ROOF PENETRATIONS ARE SUBJECT TO THE HARMFUL EFFECTS OF CONDENSATION THAT IS RESPONSIBLE FOR UP TO 80% OF ALL ROOF LEAKS.

Today however, the Thaler EPDM Base Seal eliminates condensation and condensation buildup from below, and the Thaler EPDM Triple pressure Grommet Seal eliminates flashing leaks from above. The implementation of these EPDM flashing seals in a wide array of Thaler roofing products represent a new generation of roofing products that meet the requirements of air leakage control better than any protrusion type flashings on the market today.

THALER'S COMMITMENT

In keeping with a tradition for being innovative, Thaler is constantly thinking of new and better ways to enhance roofing system performance recognized dependability. Thaler always has a better idea (keep an eye on our advances in speciality products for metal roofs). Construction professionals will continue to benefit from Thaler's commitment to providing state-of-the-art, consistently better roofing products while assuring architects, engineers, roofing consultants, specifiers, contractors, and building owners 100% roof penetration protection - an affirmation backed by the **THALER 20 YEAR WARRANTY.**





TABLE OF CONTENTS

PG DIVISIONS

- 1** Mission Statement - Business Philosophy

- 2** Stack Jack Flashings

- 3** Exhaust Vent Flashings

- 4** Mechanical & Electrical Flashings

- 5** Architectural Roof Supports

- 7** Mechanical & Electrical Roof Supports

- 9** Relief Vents

- 10** Gravity Air Vents

- 11** Fall Arrest Roof Anchors (FARA) - TWA - Econo Anchor

- 13** Split Flashings

- 14** Horizontal Lifeline Systems

- 15** Roof Drains

- 17** Planning & Engineering Services

- 19** Roof Replacement Accessories



MISSION STATEMENT

To conscientiously listen to the needs of our partnering patrons and be obligated and accountable to provide technical knowledge, superior quality products and service they need to benefit their business.

KEN THALER

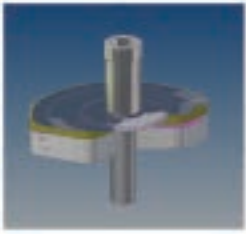
THALER BUSINESS PHILOSOPHY

Research, design and produce a range of roofing products that will outperform and provide longer life than any similar products being offered to the building industry.

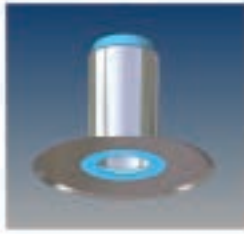




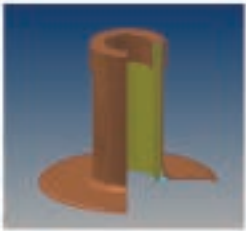
STACK JACK FLASHINGS™



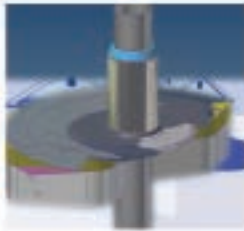
SJ-24 / SJ-25
Removable Cap
STACK JACK FLASHING™



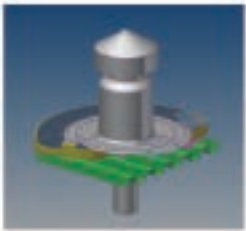
SJ-34 / SJ-35 / SJ-36
STACK JACK FLASHING™



SJ-26 / SJ-27
Removable Cap
STACK JACK FLASHING™



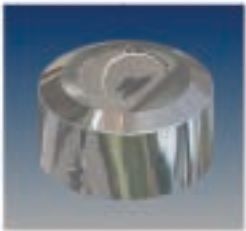
SJ-37 / SJ-38 / SJ-39
STACK JACK FLASHING™



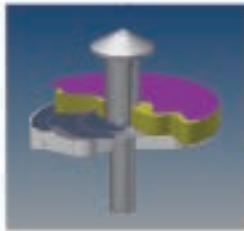
SJ-31 Vandalproof
STACK JACK FLASHING™



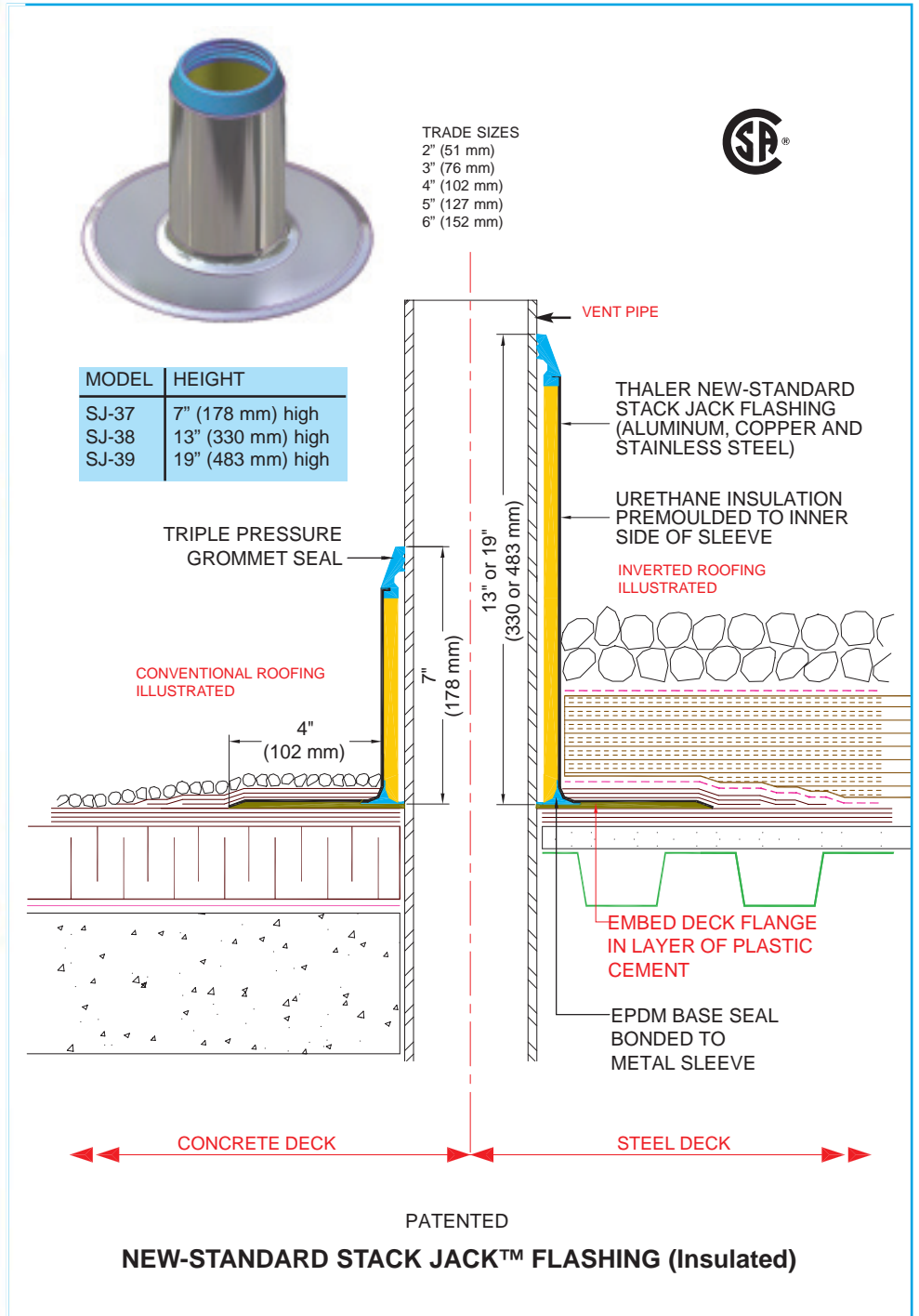
SJ-44 / SJ-45
Sloped Roof
STACK JACK FLASHING™



SJ-33
Vandalproof Vent Cap
STACK JACK FLASHING™

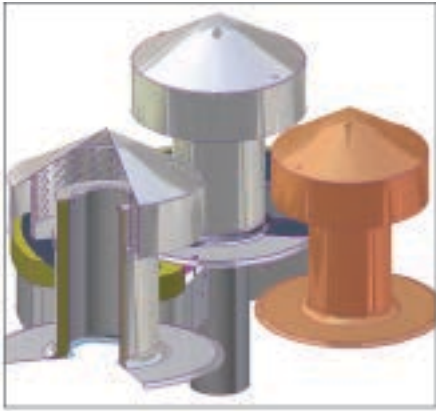


SJ-VPC Vandalproof
STACK JACK FLASHING™

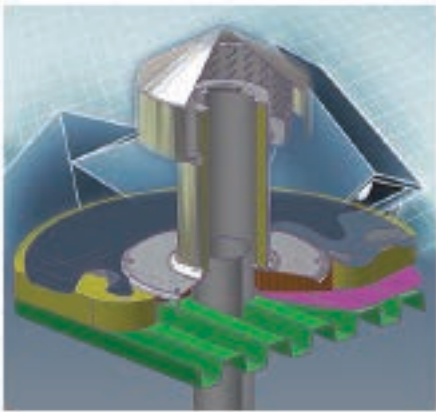




EXHAUST VENT FLASHINGS



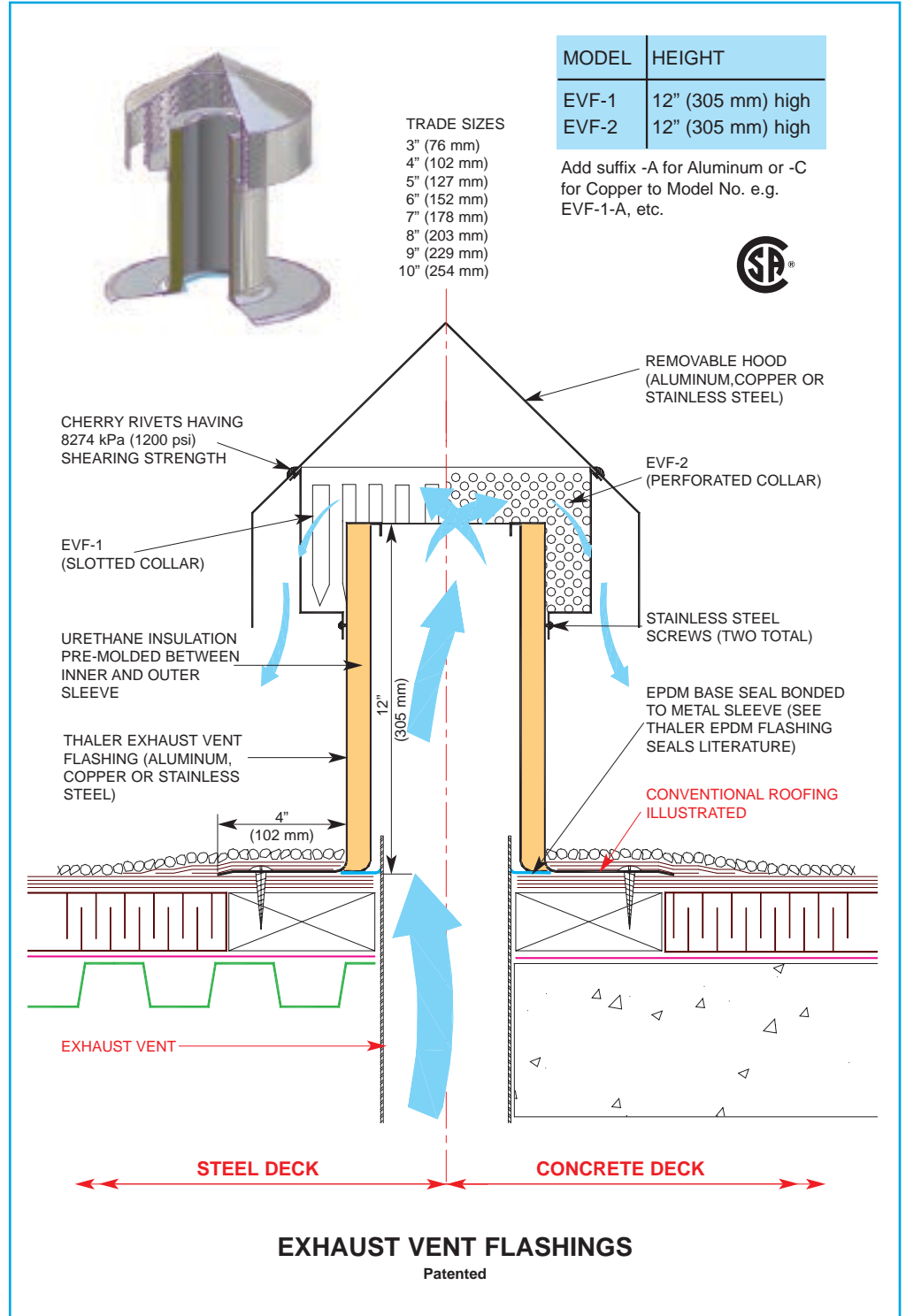
EVF-1 / EVF-2
Exhaust Vent Flashing



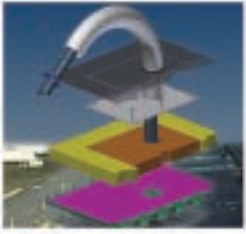
EVF-1
Exhaust Vent Flashing



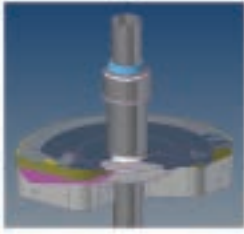
EVF-3 / EVF-4
Exhaust Vent Flashing



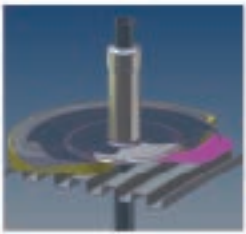
MECHANICAL & ELECTRICAL FLASHINGS



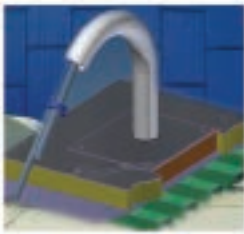
MEF-2A1
Liquid Tight Flexible
Conduit Flashing



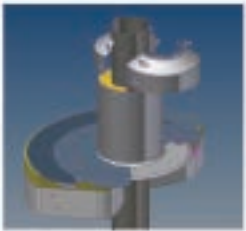
MEF-9
Modcon Gas Pipe Flashing



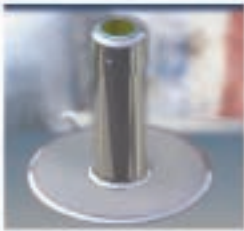
MEF-1
Rigid Conduit Flashing



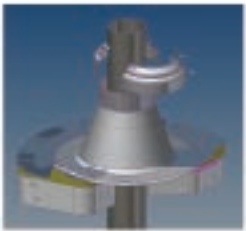
MEF-2A
Flexible Conduit Flashing



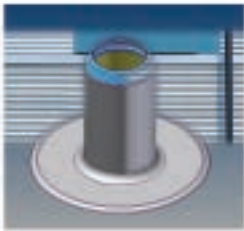
MEF-3A
Hot Pipe Flashing



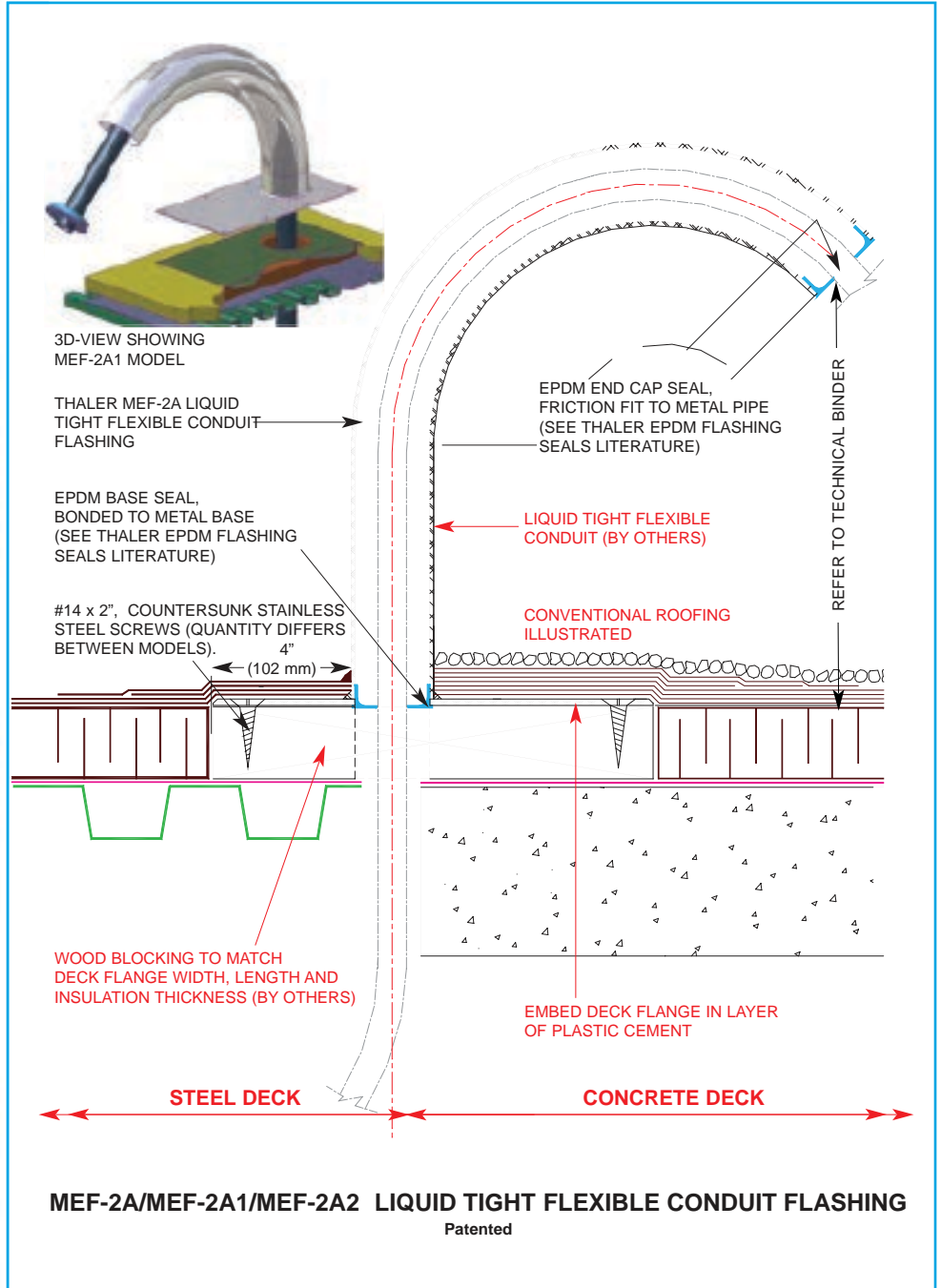
MEF-AE1 Type B
Rigid Conduit Flashing



MEF-4A
'B' Vent Flashing

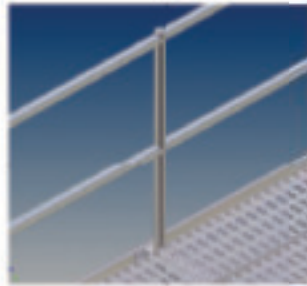


MEF-AE1 Type A
Single Rigid Conduit Flashing

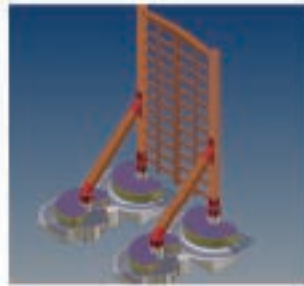




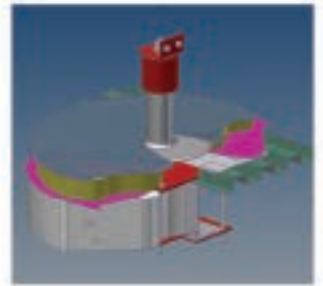
ARCHITECTURAL ROOF SUPPORTS



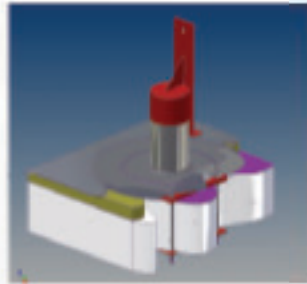
ARS-102
Fire Route Walkway



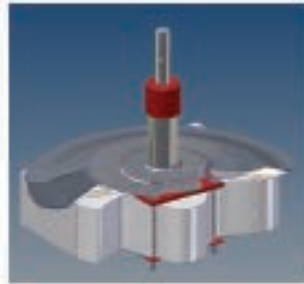
ARS-200 & ARS-210
Trellis and Brace
Roof Support



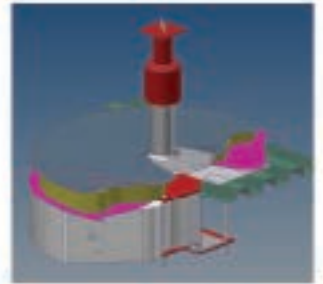
ARS-520
Metal Stair Roof Support
Offset Stringer



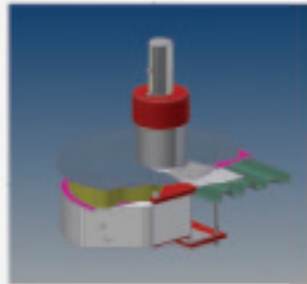
ARS-115
Rail Post



ARS-400
Flag Pole or Rail Roof Support



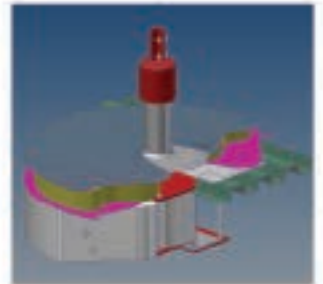
ARS-530
Stair Platform Roof Support



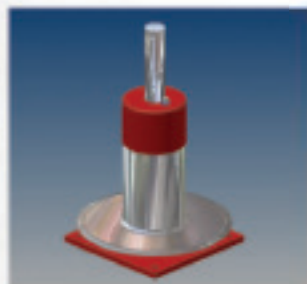
ARS-122
Satellite Dish Roof Support



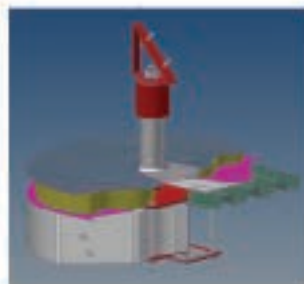
ARS-450 A/C Unit
Screen Roof Support



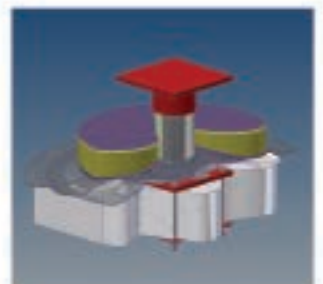
ARS-540
Upright Angle Roof Support



ARS-133
Antenna Roof Support



ARS-510
Metal Stair Roof Support



ARS-550
Miscellaneous Plate
Roof Support

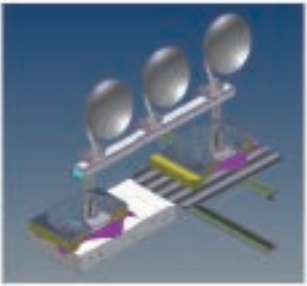
Please be advised Thaler products may undergo improvements from time to time and are subject to change without notice.

MODEL NUMBER	HSS SUPPORT PIPE			THREAD Ø	BASE PLATE		SUPPORT PLATE	FASTENING BOLT Ø
	Height	Outside Ø	Thickness		Bolt Securement	Weld Securement		
ARS-550	14" (356 mm)	2-3/8" (60 mm)	1/4" (6 mm)	1" (25 mm)	1/4" X 12" X 12" (6 mm x 305 mm x 305 mm)	3/8" X 4" X 4" (10 mm x 102 mm x 102 mm)	1/4" X 8" X 8" (6 mm x 203 mm x 203 mm)	1/4" (6 mm)
ARS-550-1	14" (356 mm)	3-1/2" (89 mm)	1/4" (6 mm)	2" (51 mm)	3/8" X 12" X 12" (10 mm x 305 mm x 305 mm)	1/2" X 6" X 6" (13 mm x 152 mm x 152 mm)	1/2" X 12" X 12" (12 mm x 305 mm x 305 mm)	3/8" (10 mm)
ARS-550-2	14" (356 mm)	4-1/2" (114 mm)	1/4" (6 mm)	2" (51 mm)	3/4" X 12" X 12" (19 mm x 305 mm x 305 mm)	5/8" X 8" X 8" (16 mm x 203 mm x 203 mm)	3/4" X 12" X 12" (19 mm x 305 mm x 305 mm)	5/8" (16 mm)

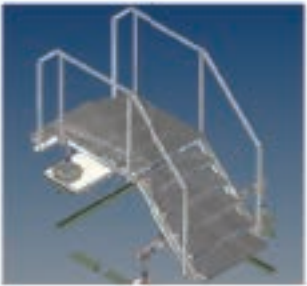
FOR SUPPORTS OTHER THAN STANDARD 14" (356 mm) HEIGHT, ADD SUFFIX *NS* TO MODEL NUMBER I.E. ARS-550-2NS



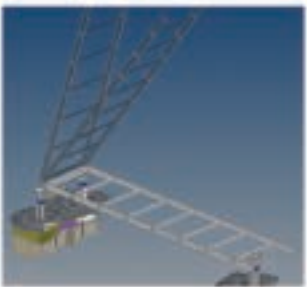
ARS-575 Triangular Antenna Roof Support



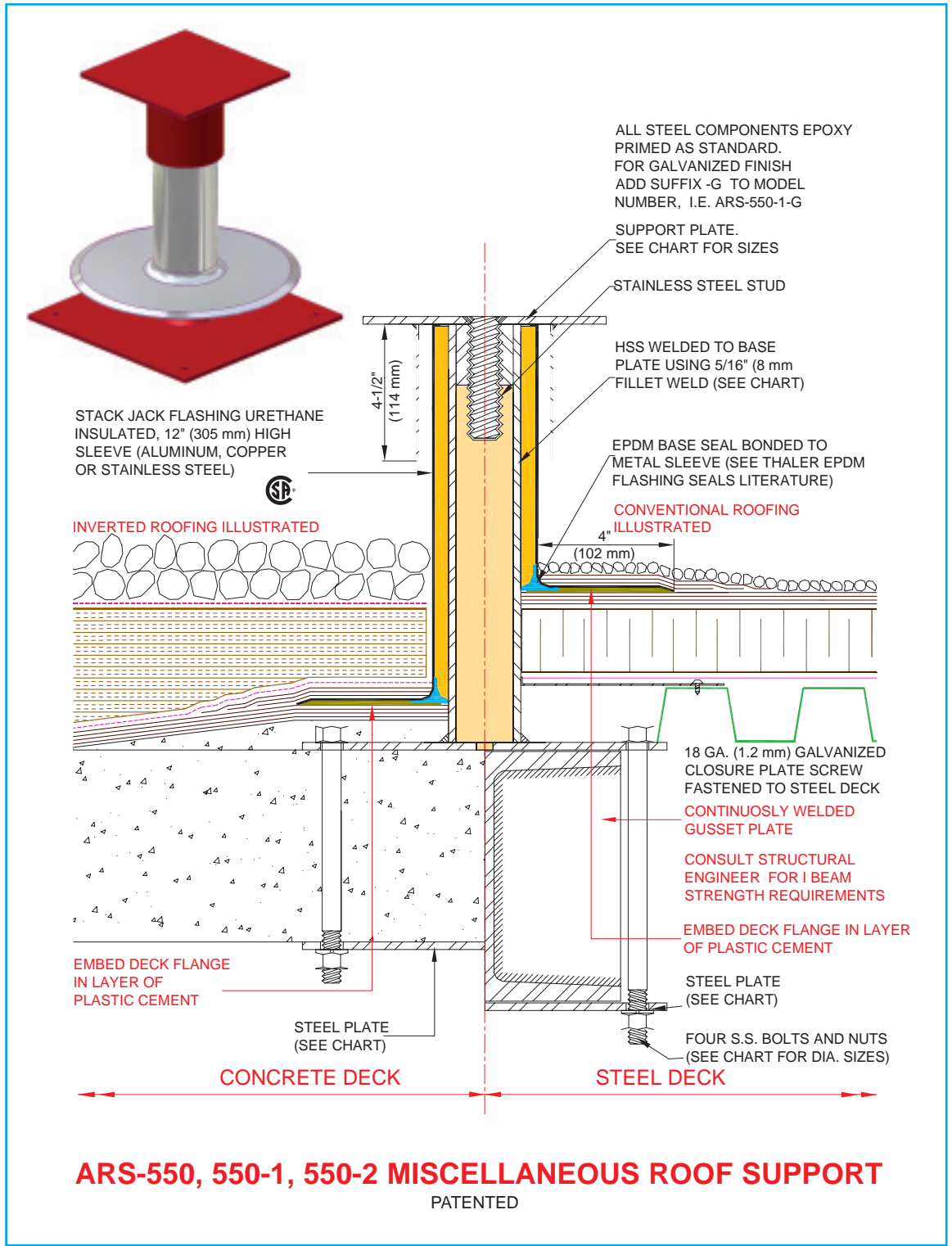
ARS-590 Satellite Dish Roof Support



ARS-680 Cross-Over Stair

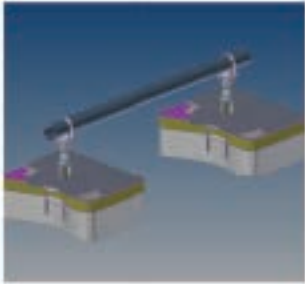


ARS-685 Tilt-Up Access Ladder & Roof Support

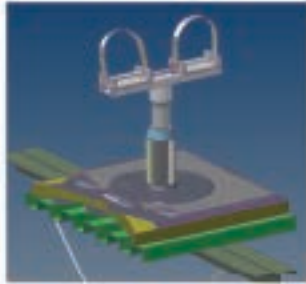




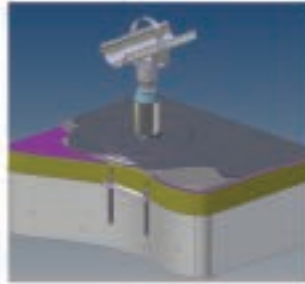
MECHANICAL & ELECTRICAL ROOF SUPPORTS



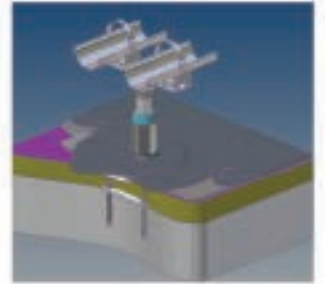
MERS-600A Pipe Support



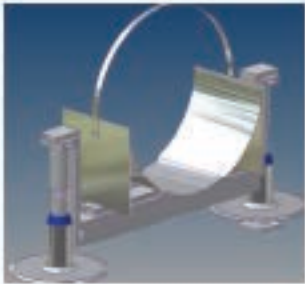
MERS-605
Double Pipe Support



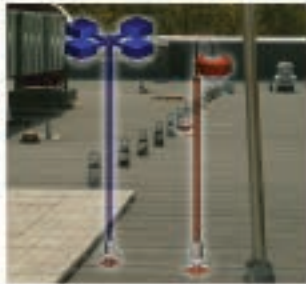
MERS-610 Pipe Support
(single, insulated)



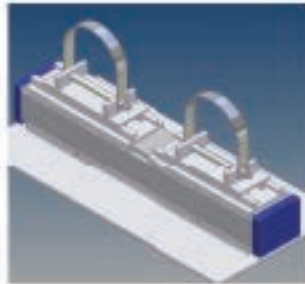
MERS-615 Pipe Support
(double, insulated)



MERS-650 Re-Roofing
Large Pipe Support



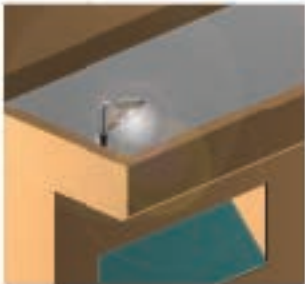
MERS-700 Terrace
Lighting Roof Support



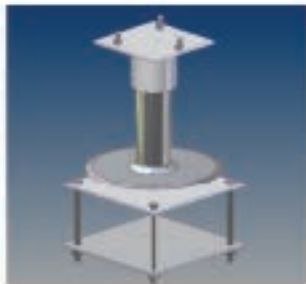
MERS-707 Gas Line/Conduit
Roof Support



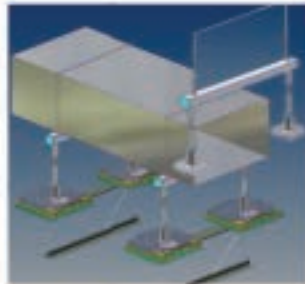
MERS-708 Tiered Gas
Line Roof Support



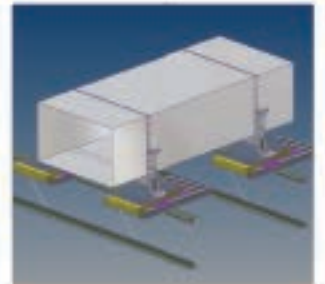
MERS-730 Security
Lighting Roof Support



MERS-740 Miscellaneous
Lighting Roof Support



MERS-800A
Duct Support



MERS-850A
Re-Roofing Duct Support



MERS-900A Air Handling
Unit Roof Support



MERS-910 Re-Roofing Air
Handling Unit Roof Support



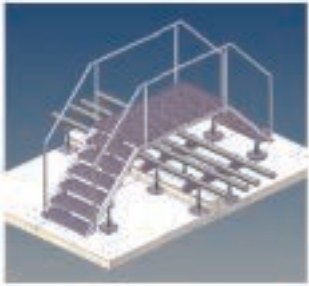
MERS-915A Air Handling
Unit Roof Support
Small Multiple Units



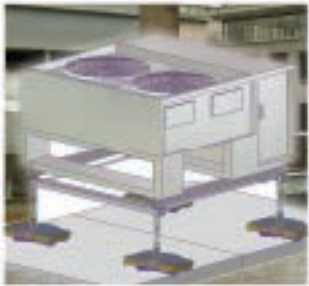
MERS-925 Air Handling
Unit Roof Support



MERS-630 Aluminum Pipe Support (large, insulated)



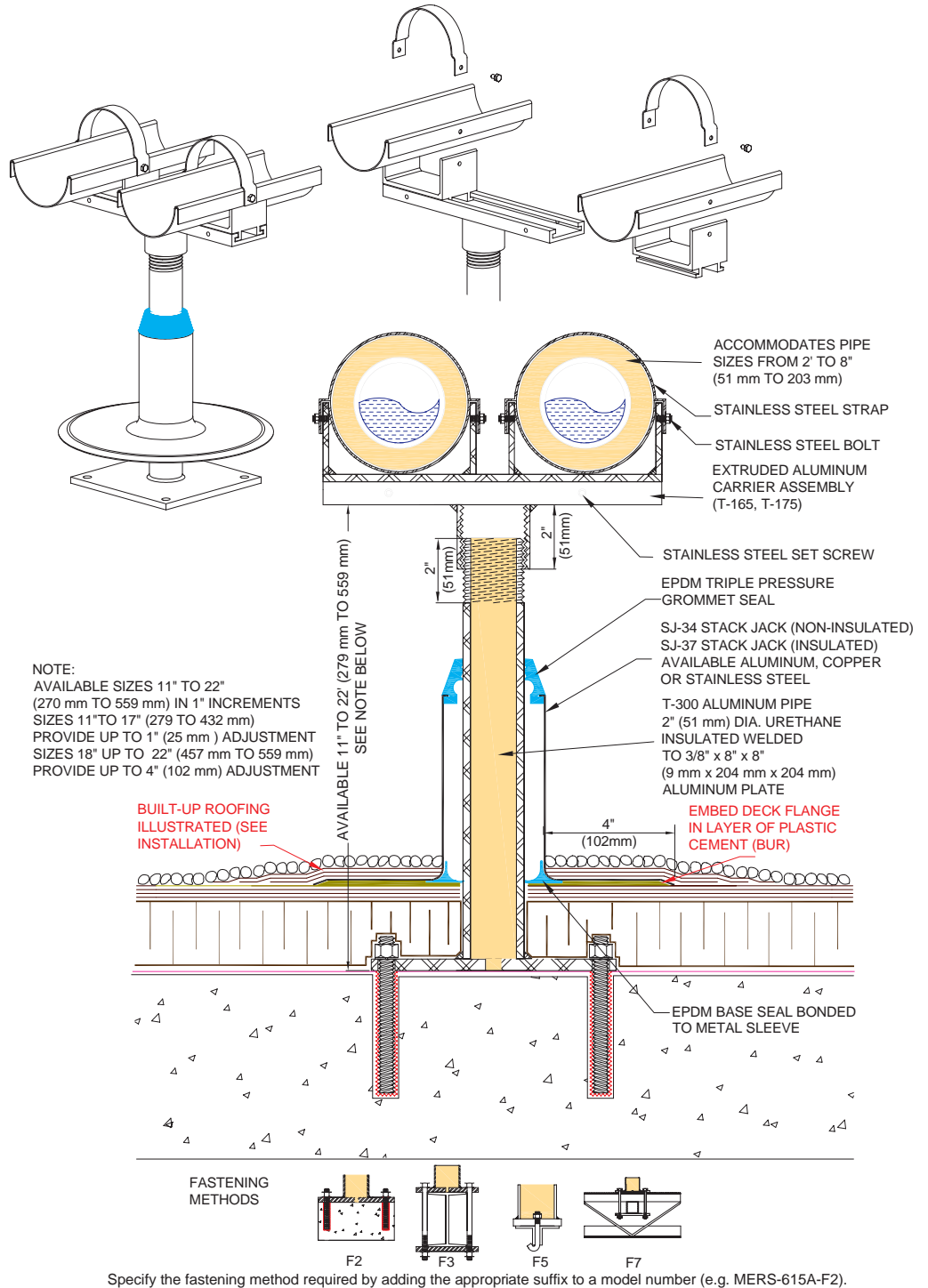
MERS-709 Combo Pipe Support & Cross Over Stair



MERS-900A Air Handling Unit Roof Support



MERS-930A Re-Roofing Air Handling Unit Roof Support

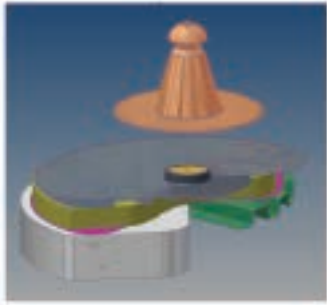


MERS-615A ALUMINUM PIPE SUPPORT (Double Insulated Pipe)

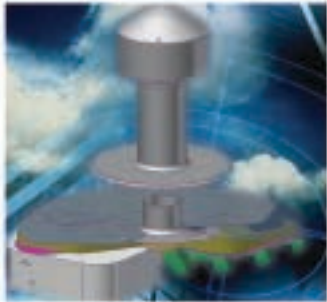
PATENTED



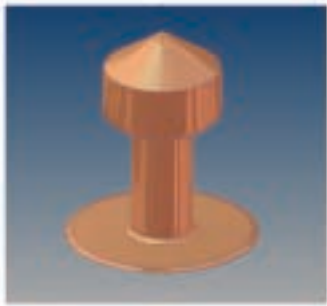
RELIEF VENTS



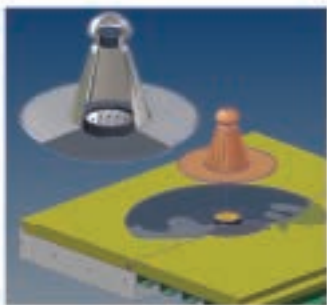
RV-1A / RV-1C
Two Way Relief Vent



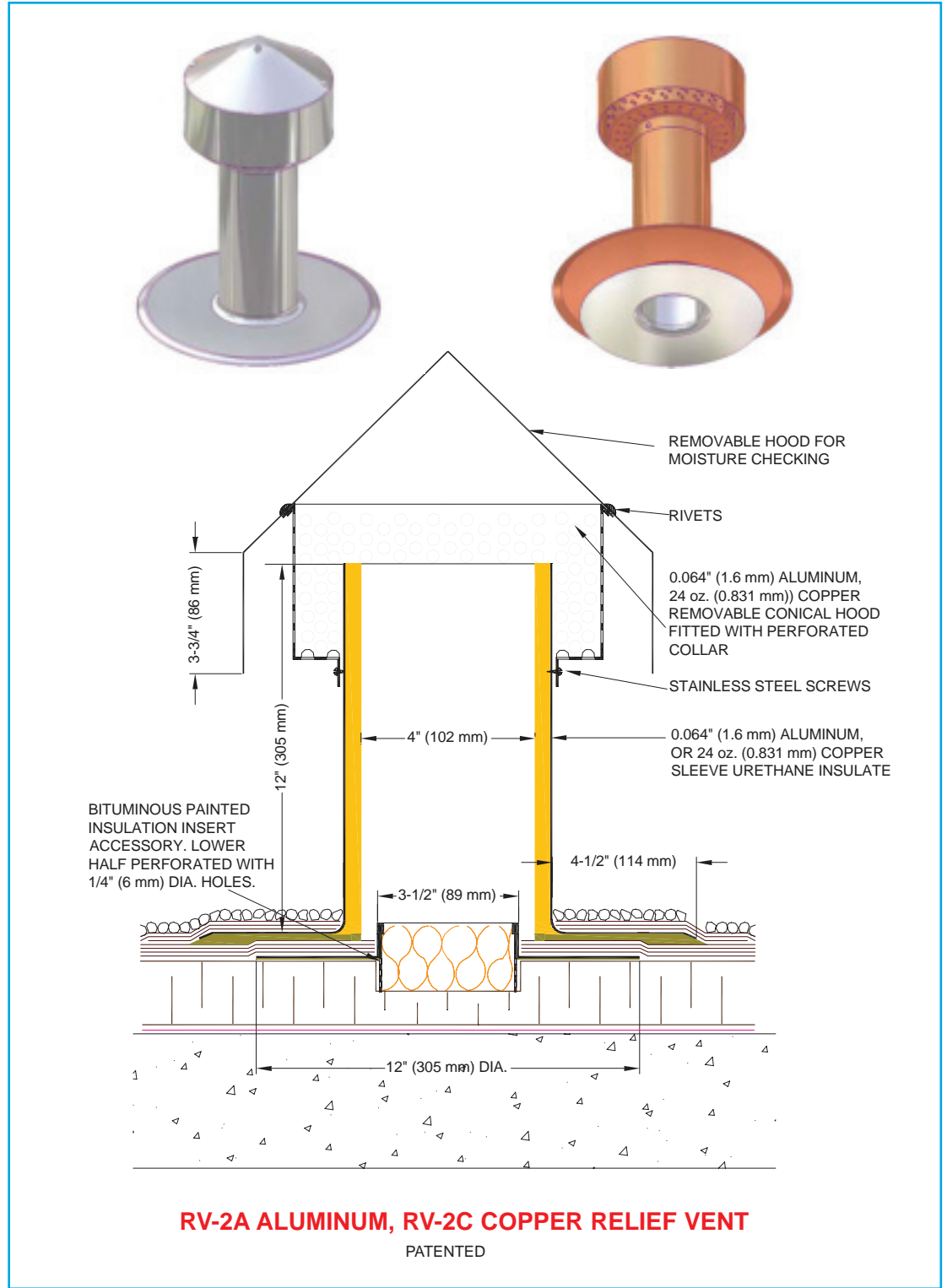
RV-2A / RV-2C
Two Way Relief Vent



RV-2A / RV-2C
Two Way Relief Vent

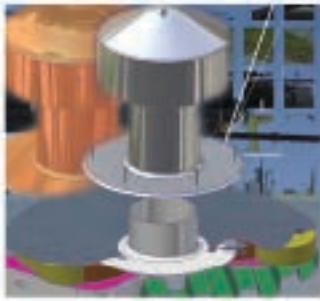


RV-3A / RV-3C
One Way Relief Vent

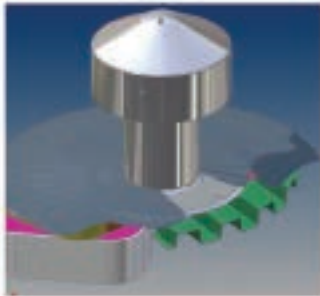




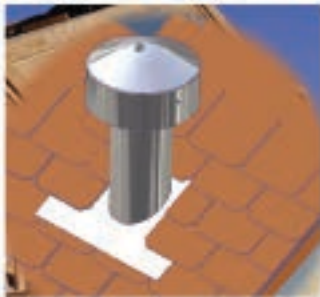
GRAVITY AIR VENTS



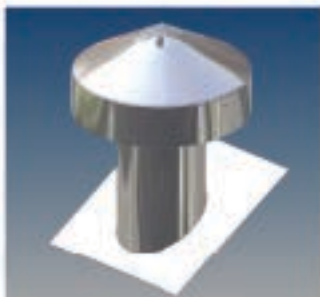
GAV-1A / GAV-1C / GAV-1SS
Gravity Air Vent (small)



GAV-2A / GAV-2C / GAV-2SS
Gravity Air Vent (large)



GAV-3A / GAV-3C / GAV-3SS
Gravity Air Vent
(small-slope roof)



GAV-4A / GAV-4C / GAV-4SS
Gravity Air Vent
(large-slope roof)



CALCULATING THE NUMBER OF GRAVITY AIR VENTS

144 Square inches (930 cm²) of free venting area is required to vent 300 square feet of roof area (1/300). A minimum of two vents are required to vent any individual roof area. Venting efficiency is increased in direct proportion to the number of vents used.

For example: Four vents each with 36 square inches (232 cm²) of free venting area on a 300 square foot (28 m²) roof is preferable to using two vents, each with 72 square inches (464 cm²) of free venting area. Increasing the number of vents, while maintain the required total amount of free venting area by decreasing the size of the individual vents allows air to drawn from the corners of the roof, thereby increasing overall venting efficiency, and avoiding condensation formation.

INSEDE DIAMETER OF VENT	FREE VENTING AREA (SQ. INCHES)
76mm (3")	7.0686 (46 cm ²)
102mm (4")	12.5664 (81 cm ²)
127mm (5")	19.6350 (127 cm ²)
152mm (6")	28.2744 (182 cm ²)
178mm (7")	38.4846 (248 cm ²)
203mm (8")	50.2656 (324 cm ²)
229mm (9")	63.6174 (410 cm ²)
254mm (10")	78.5400 (507 cm ²)

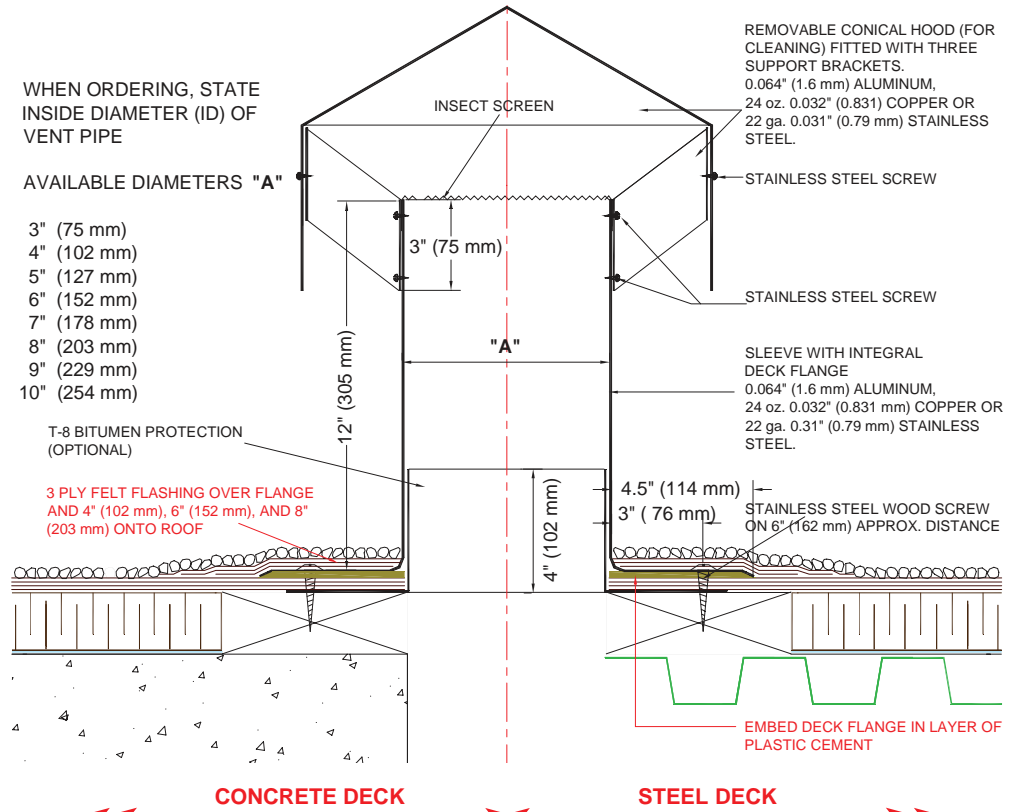
WHEN ORDERING, STATE
INSIDE DIAMETER (ID) OF
VENT PIPE

AVAILABLE DIAMETERS "A"

- 3" (75 mm)
- 4" (102 mm)
- 5" (127 mm)
- 6" (152 mm)
- 7" (178 mm)
- 8" (203 mm)
- 9" (229 mm)
- 10" (254 mm)

T-8 BITUMEN PROTECTION
(OPTIONAL)

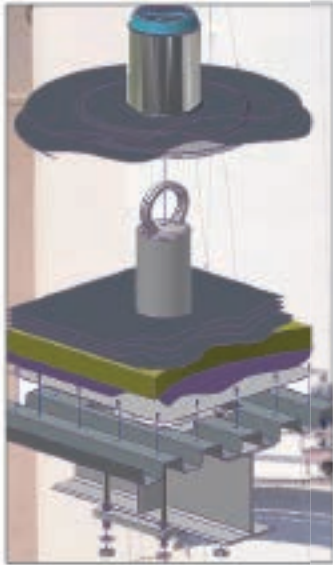
3 PLY FELT FLASHING OVER FLANGE
AND 4" (102 mm), 6" (152 mm), AND 8"
(203 mm) ONTO ROOF



GAV-1A, GAV-1C, GAV-1SS GRAVITY AIR VENTS (Small Size Vents)



FALL ARREST ROOF ANCHORS



FARA -3/-13/-13SS/
-13U/-13USS
Bolt Around Beam



FARA -1/-11/-11SS/
-11U/-11USS
Bolt Through



FARA -2/-12/-12SS/
-12U/-12USS
Adhesive Bolt



FARA -4/-14/-14SS/
-14U/-14USS
Weldable



FARA -5/-15/-15SS/
-15U/-15USS
Cast In Place



FARA -31/-41/-41SS/
-41U/-41USS
"SWIVEL EYE" Bolt-Through



FARA -32/-42/-42SS/
-42U/-42USS
"SWIVEL EYE" Adhesive Bolt



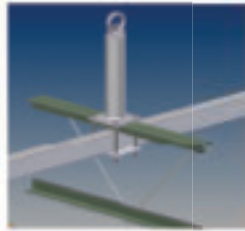
FARA -33/-43/-43SS/
-43U/-43USS "SWIVEL EYE"
Bolt Around Beam



FARA -34/-44/-44SS/
-44U/-44USS
"SWIVEL EYE" Weldable



FARA -33/-43/-43SS/-43U/-43USS
FARA -35/-45/-45SS/-45U/-45USS



FARA -36/-46/-46SS/
-46U/-46USS "SWIVEL EYE"
Bolt Around OWSJ



FARA -37/-47/-47SS/
-47U/-47USS "SWIVEL EYE"
Pre Cast Core Bolt



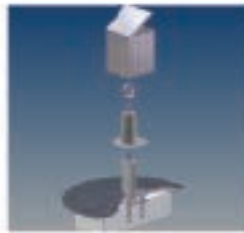
FARA -82/-92/-92U/
WALL ANCHOR
Cast In Place



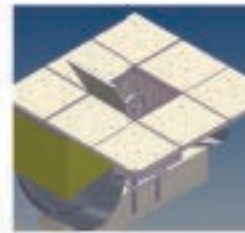
FARA -84/-94/-94SS/
-94U/-94USS
Cladding Bolt



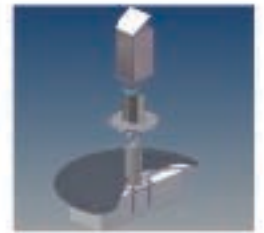
FARA -96
TERRACE ANCHOR



FARA -96A/-106A/-106ASS/
-106AU/-106AUSS High Fall
Arrest Terrace Roof Anchor



FARA -96A/-106A/-106ASS/
-106AU/-106AUSS High Fall
Arrest Terrace Roof Anchor-Top View



FARA -96B/-106B/-106BSS/
-106BU/-106BUSS High Fall
Arrest Terrace Roof Anchor

**TWA (ECONO) ANCHORS
ASK ABOUT THIS PRODUCT
FROM OUR TEAM OF ENGINEERS**

**(ECONO) ANCHORS THAT
MEET ALL CANADIAN AND
U.S. STANDARDS AT
COMPETITIVE PRICING**



FARA -150
DAVIT Arm Base



FARA -155
Movable DAVIT Arm



FARA -170 Swivel Outrigger
Beam and Arm



FARA -180
Fall Arrest "Rope Drop" Anchor

* FOR NON-STANDARD ALTERNATIVES PLEASE CONTACT OFFICE



FARA-7/-17/-17SS/
-17U/-17USS
Pre Cast Core Bolt



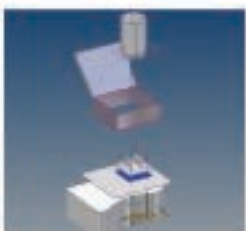
FARA-35/-45/-45SS/
-45U/-45USS "SWIVEL EYE"
Cast in Place



FARA-85/-95/-95U/
Wall Anchor

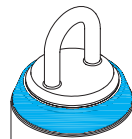
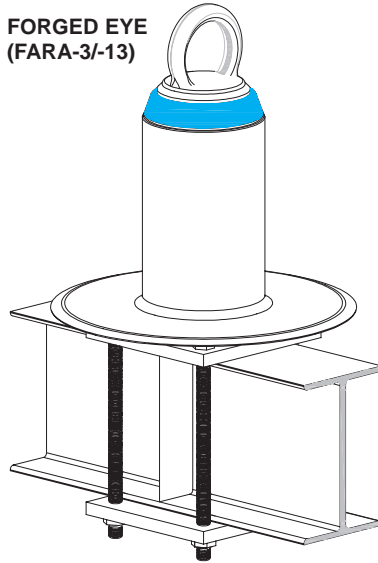


FARA-100/-101/-110/
Fall Arrest Rope Stop



FARA-1500
Recessed David Arm Base

**FORGED EYE
(FARA-3/-13)**



**U BOLT EYE
(FARA-13U)**

EPDM TRIPLE PRESSURE GROMMET SEAL

CONVENTIONAL ROOF ILLUSTRATED (BUR)

EMBED DECK FLANGE IN LAYER OF PLASTIC CEMENT (BUR)

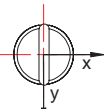
5/8" x 8" x 8" (16 mm x 203 mm x 203 mm) PLATE

GUSSET PLATES BY OTHERS (WHEN REQUIRED)

All stainless steel anchor also available (FARA-13SS/-13USS) e.g. eye, HSS, base plates, fastening and flashing.

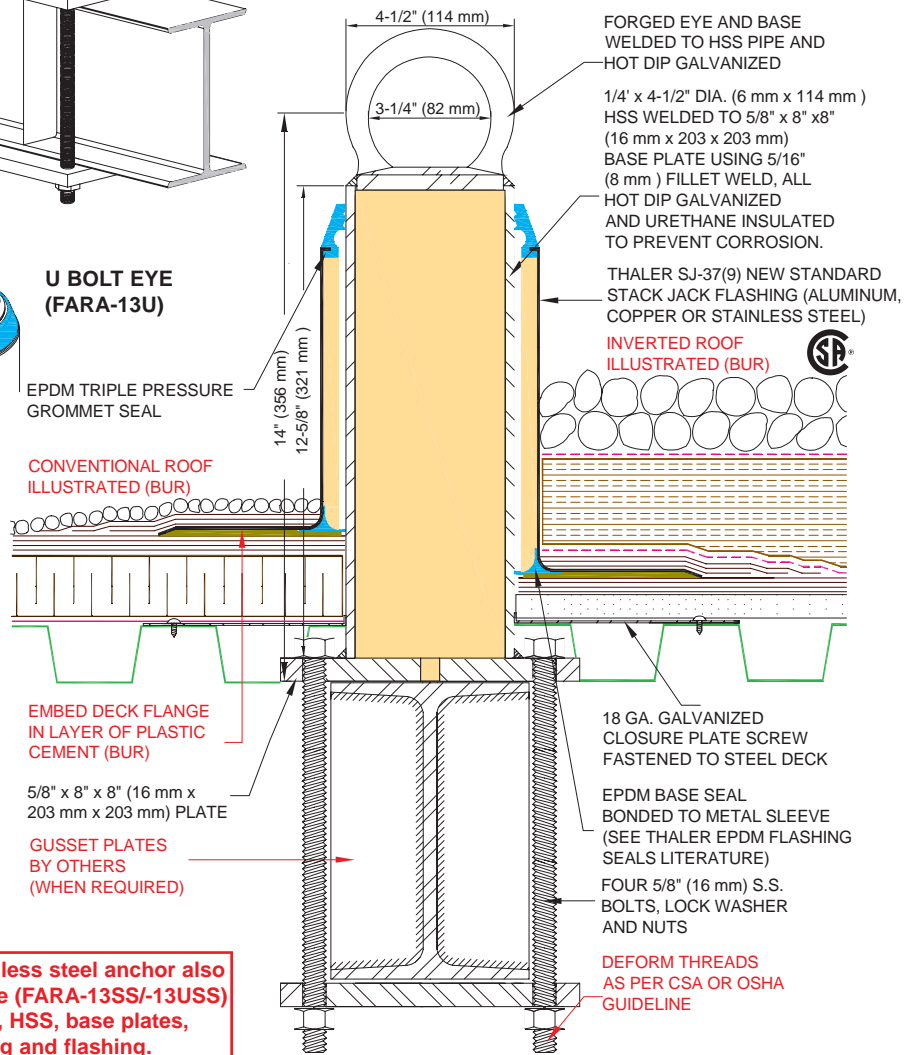
Anchor Type	Eye Construction	Load Direction	Deflection After Load of 5400 lbs (24.03 kN) was Released
FARA-3	Forged Eye, Galvanized	Perpendicular to the eye (x)	0.016" (0.406 mm)
		Parallel to the eye (y)	0.008" (0.203 mm)
FARA-13	Forged Eye, Stainless Steel	Perpendicular to the eye (x)	0.046" (1.168 mm)
		Parallel to the eye (y)	0.013" (0.330 mm)
FARA-13U	U Bolt, Stainless Steel	Perpendicular to the eye (x)	0.203" (5.156 mm)
		Parallel to the eye (y)	0.019" (0.482 mm)

ALL TESTING REPORTS AVAILABLE UPON REQUEST



Typical tie-off direction

Note: Anchors are designed to resist without fracture and/or pull-out a force of 5400 lbs (24.03 kN), applied in the most adverse direction (x).

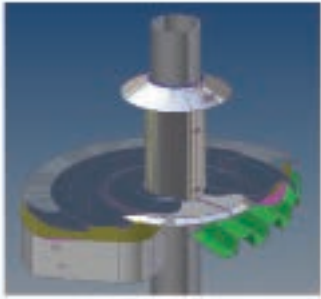


FARA-3/-13/-13U FALL ARREST ROOF ANCHORS (Bolt Around Beam)

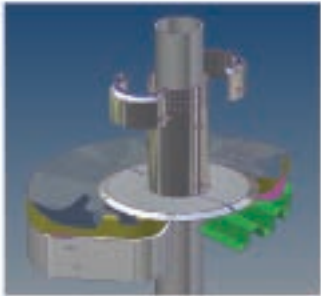
PATENTED



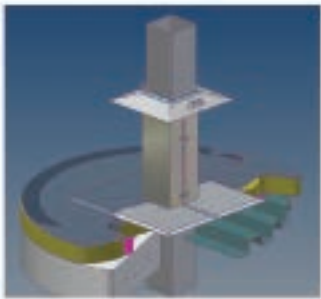
SPLIT FLASHINGS



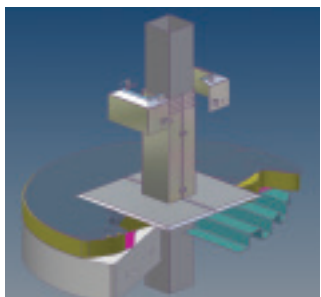
SPJ-1
Round Split Flashing



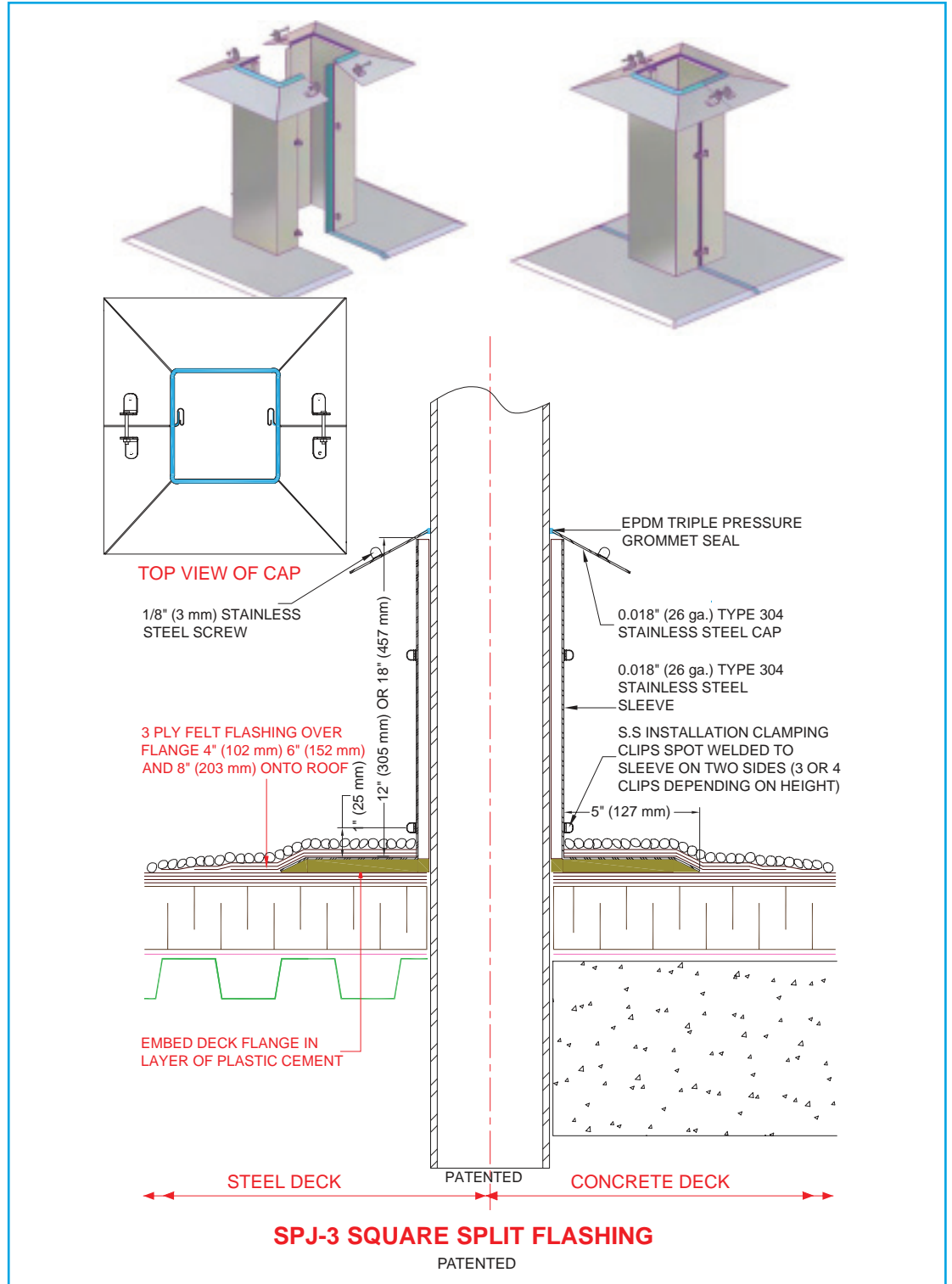
SPJ-2
Round Split Flashing



SPJ-3
Square Split Flashing



SPJ-4
Square Split Flashing
Vented Cap





K-700 (3)
Terminal Corner Anchor with
Tensioner and Energy Absorber



K-700 (4) Shackle Connection
with Tensioner



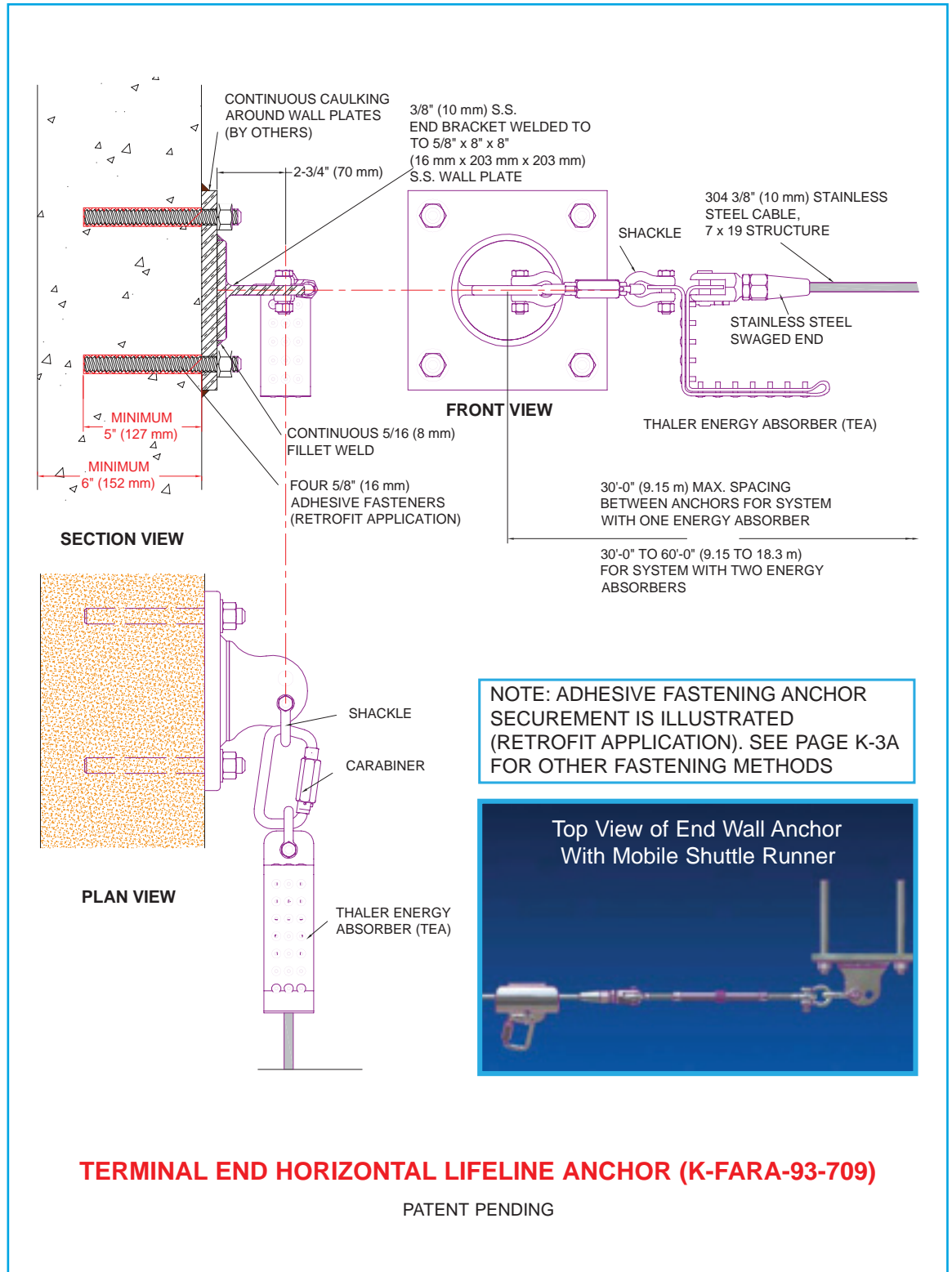
K-700 (7)
Shuttle on Cable



K-700 (9)
Single Straight Line



K-700 (10)
Corner Anchor

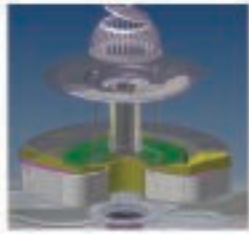




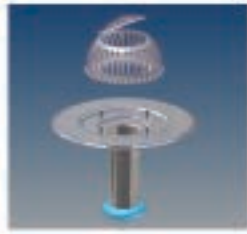
ROOF DRAINS



RD-1C Vandalproof Copper Roof Drain



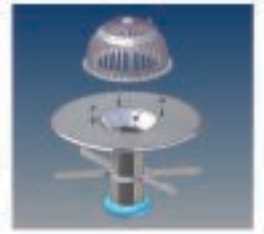
RD-4 Vandalproof Roof Drain



RD4-RR Vandalproof Roof Drain



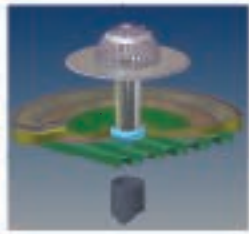
RD-4-8, RD4-10 Vandalproof Big Roof Drain with New 16\"/>



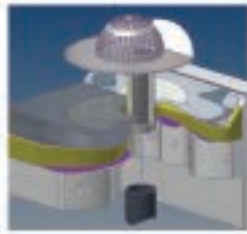
RD-7 RR Vandalproof Roof Drain



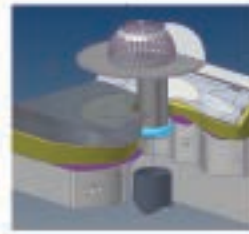
RD-14 Vandalproof Roof Drain



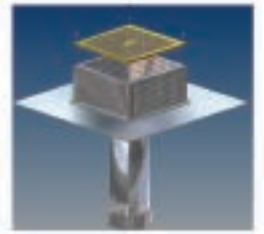
RD-14 RR Vandalproof Roof Drain



RD-16 Vandalproof Roof Drain



RD-16 RR Vandalproof Roof Drain



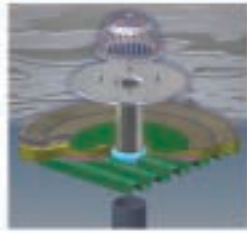
RD-19 SS Stainless Steel Roof Drain



RD-24 Vandalproof Roof Drain



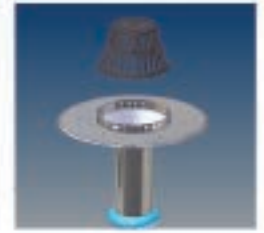
RD-24-8, RD-24-10 Vandalproof Roof Drain



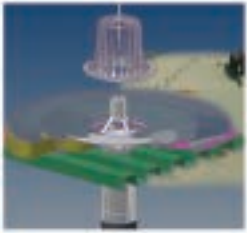
RD-24 RR Vandalproof Retrofit Roof Drain



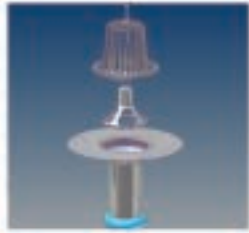
RD-28 Economy Roof Drain



RD-28 RR Economy Retrofit Roof Drain



RDX-30 Economy Roof Drain



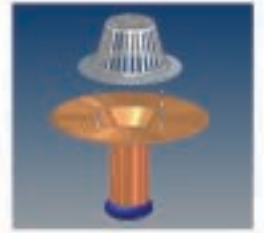
RDX-30 RR Economy Retrofit Roof Drain



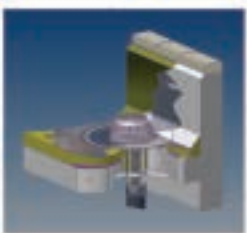
RDX-30 RR Roof Drain



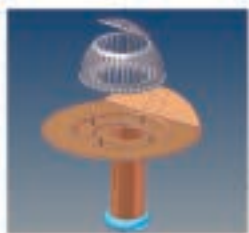
RD-38 Economy Roof Drain



RD-38 RR Economy Retrofit Roof Drain



RD-160 Vandalproof Roof Drain



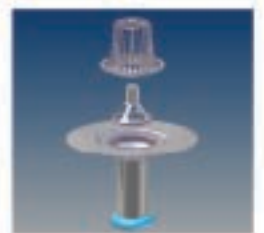
RD-160 RR Vandalproof Roof Drain



RD-240 Vandalproof Roof Drain



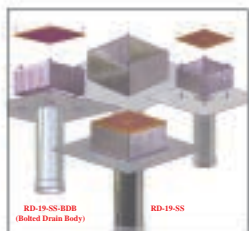
RDX-300 Economy Roof Drain



RDX-300 RR Economy Retrofit Roof Drain



RD-7-8 Vandalproof Roof Drain with New 16" Dome



RD-19 SS-RR Stainless Steel Retrofit Roof Drain



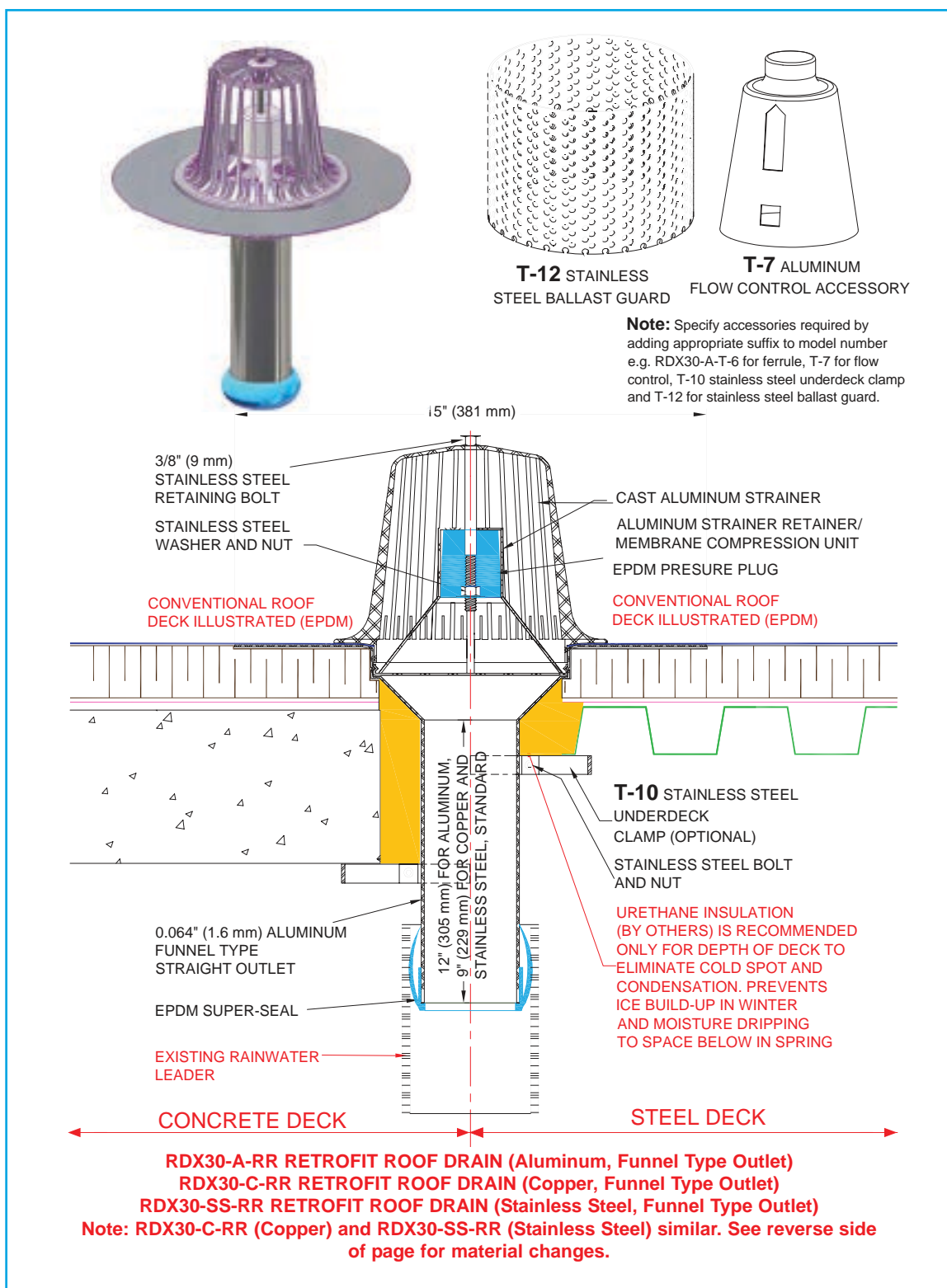
RD-29 RR Economy Roof Drain



RD-39 Economy Roof Drain



DD-1A Terrace Deck Drain





PLANNING & ENGINEERING SERVICES



Engineered stamped layout or shop drawings for any fall protection scenario, including section details, can be produced for any building and any structural condition without obligation providing Thaler products are specified. Following the requirements of OSHA, labour regulations, safety standards or other regulatory bodies, roof anchors are located to provide the safest and most economical layout possible. Detailed installation instructions are supplied with every Thaler product for installation by others, or by Thaler if desired.

SAMPLES

Thaler will supply samples at no charge to specifiers on request, provided samples are returned upon completion of the evaluation.

SPECIFICATIONS

Specifications (Section Format) for fall protection roof anchors detailing the product, installation methodology, and structural loads are also provided.

ESTIMATING / PRICING

An estimate can be provided for any roof anchor project based upon a published price list of all products supplied that is available upon request.

CUSTOM PRODUCTS

The need for custom designed products arises in many instances. Thaler can design, test and produce custom products to provide a workable solution. Simply provide the structural drawings, a roof plan, and building elevations, and Thaler will produce a layout, review it with the architect, engineer or specifier, refine it where necessary, and construct a prototype for acceptance and testing.



ROOF ACCESSORIES



T-5 Sediment Collar

T-6 Ferrule

T-7 Flow Control

T-9 Super Seal

T-10 Underdeck Clamp

T-12 Stainless Steel
Ballast Guard

Emseal Tape

T-13 Cast Aluminum Strainer
(for RDX-30)

T-14 Cast Aluminum Strainer
(RD-28 & RD-29)

T-15 Cast Aluminum Strainer (RD-4)

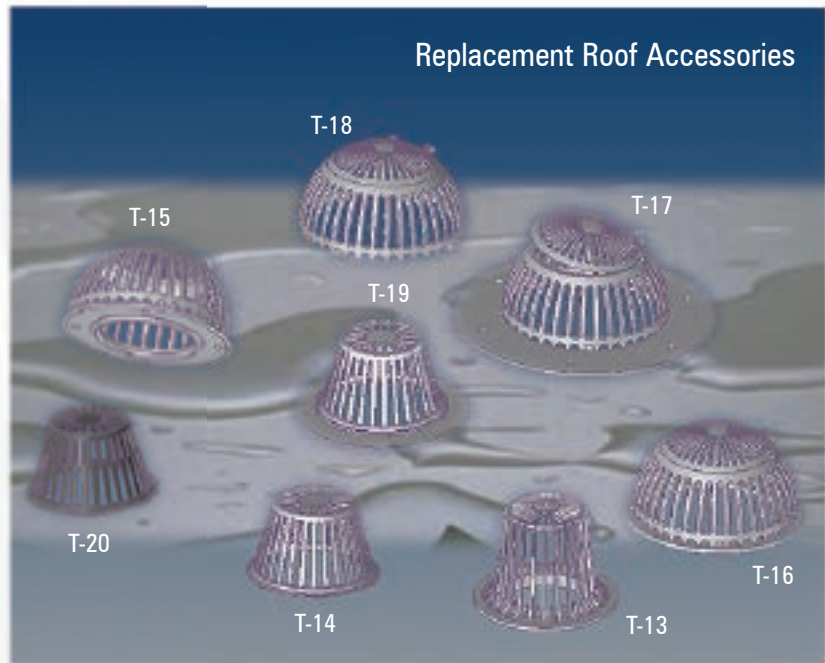
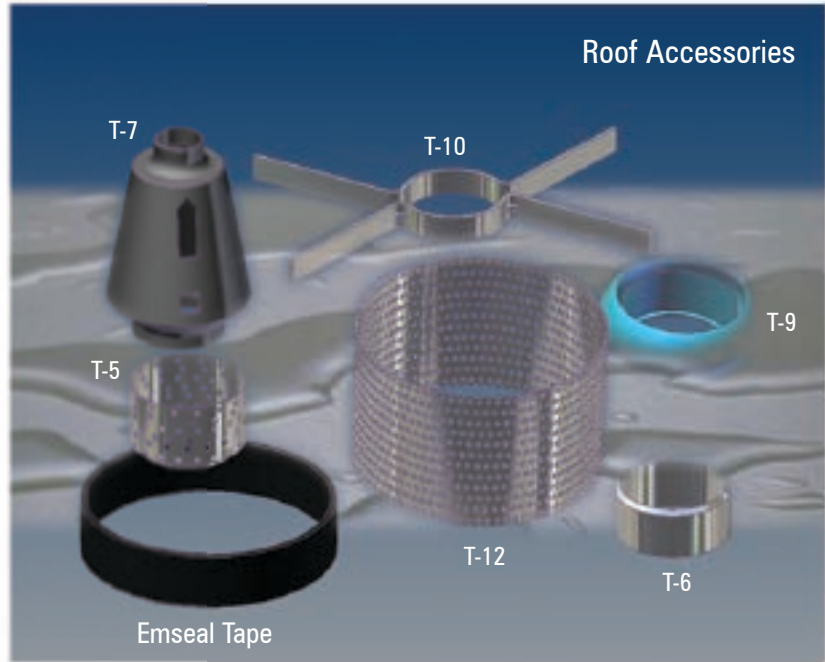
T-16 Cast Aluminum Strainer
(for RD-7, RD-24)
New 16" Thaler Domes

T-17 Cast Aluminum Strainer
(for RD-4-8, RD-4-10,
RD-7-8, RD-24-8, RD-24-10)

T-18 Cast Aluminum Strainer
(for RD-14, RD-16)

T-19 Cast Aluminum Strainer
(RD-38, RD-39)

T-20 PVC Strainer (RD-28, RD-29)





**LET US TELL YOU ABOUT THE
THALER METAL DIFFERENCE!**

WWW.THALERMETAL.COM

For a complete listing of all Thaler Roofing Products please refer to our Comprehensive Technical Binder.



HEAD OFFICE

Thaler Metal Industries Ltd.

3857 Nashua Drive
Mississauga, ON L4V 1R3, CANADA
TEL. 905-677-1520 / 1-800-387-7217
FAX 905-677-1503

USA Thaler Metal USA Inc.

USA-CDN TOLL-FREE 1-800-576-1200

WWW.THALERMETAL.COM