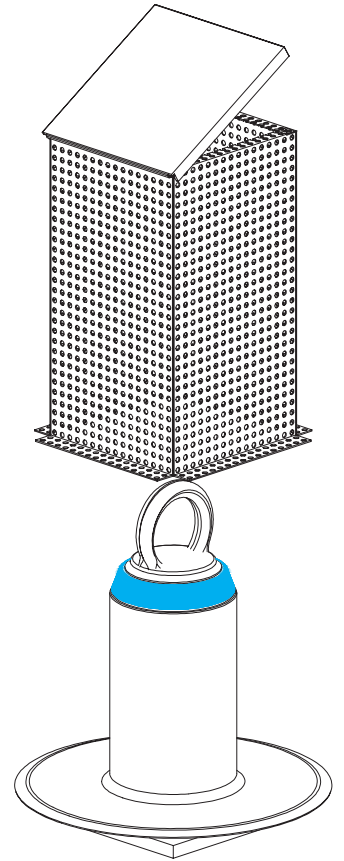
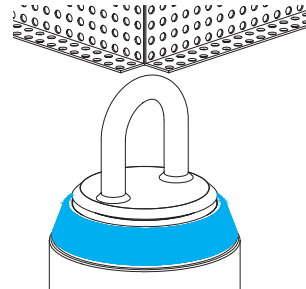


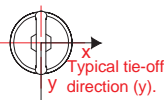
All stainless steel anchor also available (FARA-106BSS/-106BUSS) e.g. eye, HSS, base plate, perforated box, fastening, and flashing.

U BOLT EYE (FARA-106BU)

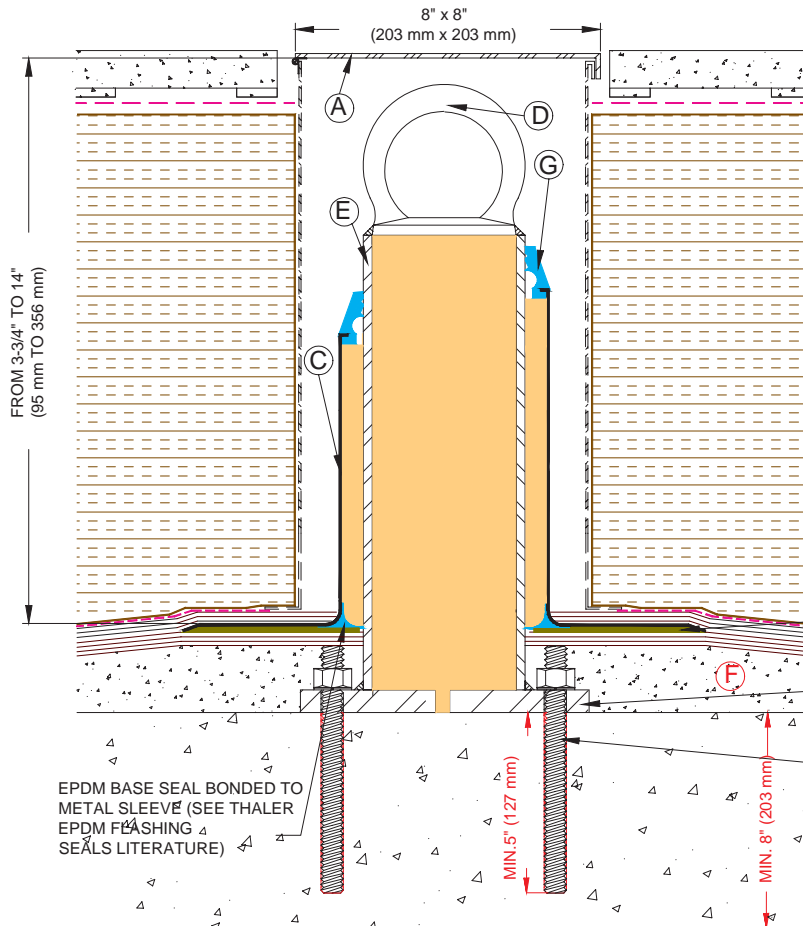


FORGED EYE FARA-96B/106B

Anchor Type	Eye Construction	Eye Orientation	Deflection After Load of 5400 lbs (24.03 kN) was Released
FARA-96B	Forged Eye, Galvanized	Parallel to the eye (y)	0.088" (2.235 mm)
FARA-106B	Forged Eye, Stainless Steel	Parallel to the eye (y)	0.085" (2.159 mm)
FARA-106BU	U Bolt, Stainless Steel	Parallel to the eye (y)	0.095" (2.413 mm)



Note: Anchors are designed to resist without fracture and/or pull-out A force of 5400 lbs (24.03 kN), applied in the most adverse direction (x). All testing reports available upon request.



- (A) 22 GA. x 8" x 8" (0.76 mm x 203 mm x 203 mm) PERFORATED S.S. ENCLOSURE
  - (B) 1/8" x 8-1/2" x 8-1/2" (3 mm x 305 mm x 305 mm) STAINLESS STEEL COVER WITH S.S. PIANO HINGE
  - (C) SJ-37, SJ-38 OR SJ-39, STACK JACK AVAILABLE IN ALUMINUM, COPPER OR STAINLESS STEEL FLASHING
  - (D) COMBINATION FORGED EYE AND BASE
  - (E) 1/4" x 4-1/2" DIA. (6 mm x 114 mm) HSS WELDED TO 5/8" x 8" x 8" (16 mm x 203 mm x 203 mm) BASE PLATE USING 5/16" (8 mm) FILLED WELD AND HOT DIP GALVANIZED
  - (F) GROUT, LEVELLED 12" (305 mm) SQUARE AT ANCHOR AND TAPERING TO DECK FOR 48" (1220 mm) RADIUS
  - (G) EPDM TRIPLE PRESSURE GROMMET SEAL
- EMBED DECK FLANGE IN LAYER OF PLASTIC CEMENT (BUR) (5/8" x 8" x 8" (16 mm x 203 mm x 203 mm) STEEL PLATE
- FOUR 5/8" (16 mm) ADHESIVE FASTENERS (BY OTHERS)
- DEFORM THREADS AS PER CSA OR OSHA GUIDELINE (2 THREADS MINIMUM)
- EPDM BASE SEAL BONDED TO METAL SLEEVE (SEE THALER EPDM FLASHING & SEALS LITERATURE)
- MIN. 5" (127 mm)
- MIN. 8" (203 mm)

## FARA-96B/-106B/-106BU HIGH "FIXED EYE" FALL ARREST TERRACE ANCHOR (Adhesive Bolt)

NOTE: SEE PAGE I-20 FOR ALTERNATIVE FASTENING METHODS