

ROOF SPECIALTIES

**D-190 EASY SLIDER
HORIZONTAL LIFELINE
FOR METAL ROOFS**

DESCRIPTION

The Thaler D-190 EASY SLIDER™ Horizontal Lifeline for Metal Roofs consists of urethane insulated hollow steel post (HSS) anchors with base plates bolted to hollow steel structural struts. The struts are then bolted between and to the metal roof structure frame (Z-channels or C-channels). Anchors are equipped with different type heads to accommodate a stainless steel cable lifeline. All anchor posts are designed to resist without fracture a pull-out force of 5400 lbs (24.3 kN), applied in the most adverse direction.

The anchors posts are sealed to the metal roof using the Thaler D-100 black colored EPDM Flexible Flashing that has been designed specifically for sloped metal roofs. The flashing consist of an upper flashing boot with Triple Pressure Grommet Seal, a separate Base Seal, cast aluminum hold-down ring, and a series of aluminum lock rivets with synthetic rubber washers under the heads. See separate Thaler D-100 EPDM Flexible Flashing For Sloped Metal Roofs literature.

Prominent Features: Hands free system allows uninterrupted movement for length of cable. Patented Thaler D-100 EPDM Flexible Flashing Base Seal eliminates condensation and condensation build-up from below, and the EPDM Triple Pressure Grommet Seal eliminates flashing leaks from above (seals never, ever need caulking). D-100 installation also accommodates thermal movement constantly taking place in the structure or metal roofing. Aesthetically pleasing. Ensures structural sufficiency. Maintenance free. Anchor integrity is backed by \$7,000,000.00 liability insurance.

RECOMMENDED USE

Suitable for all slopes from 2° to 45° for both travel restraint and fall arrest using full body harness and lanyard, self retracting lifeline or lifeline with rope grab. Provides fall protection for servicing rooftop equipment, inspecting roof, skylights, and similar items.

APPLICABLE STANDARDS

Thaler D-190 EASY SLIDER conforms to all Canadian and U.S. standards, provincial and state labor/safety codes and materials standards relating to anchor fabrication and horizontal lifeline applications. Conformance includes CSA, OML, ASME, ANSI, IWCA, OSHA, CAL OSHA, AISC, AWS, and other references.

WARRANTY

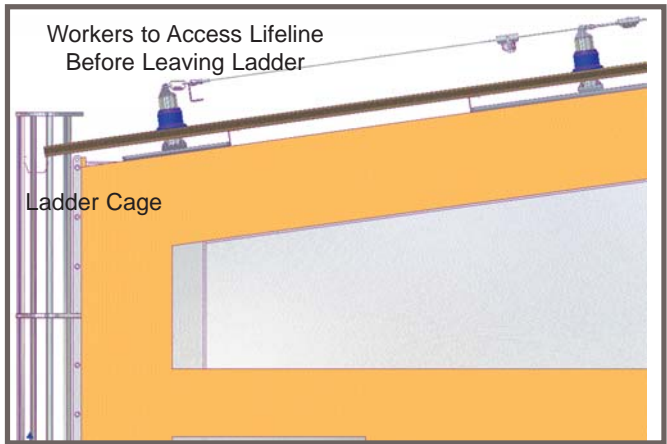
20 year warranty (lifetime on all stainless steel) against **leaks, condensation and defects** in materials and/or manufacture when installed in accordance with Thaler "Installation Instructions".

MAINTENANCE

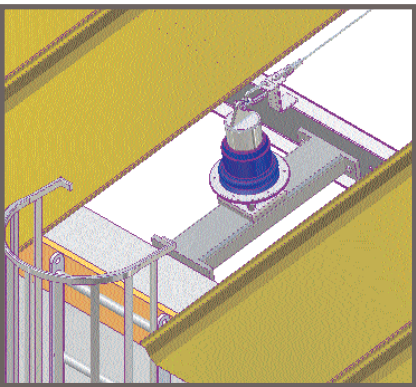
Regulatory authorities require the horizontal lifeline system be inspected annually with inspection data (date, inspector's name and comments) recorded in the Fall Protection Maintenance Log book. Apart from this requirement, the D-190 EASY SLIDER stainless steel cable only requires occasional wiping with a damp cloth to ensure free and easy movement of the shuttle component.

PLANNING SERVICE

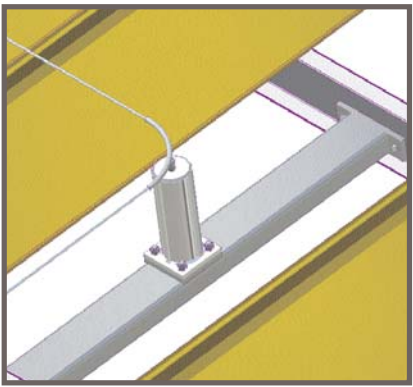
Thaler will provide layout drawings for the D-190 EASY SLIDER in compliance with all standards, safety regulations and local building codes.



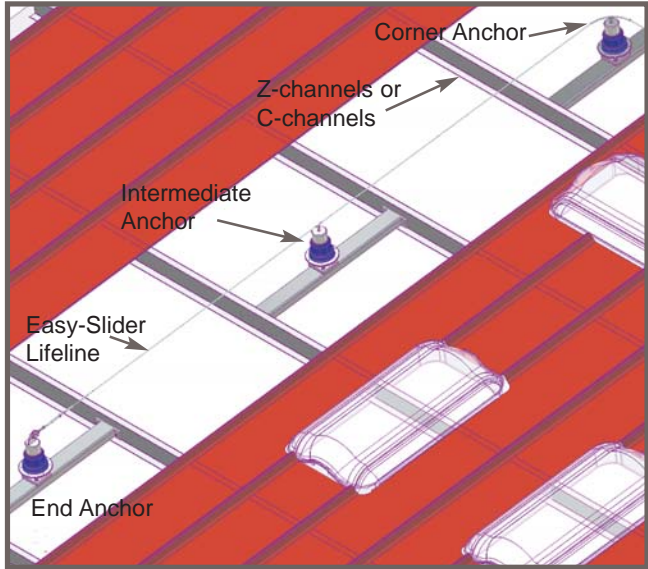
Section detail At Eave



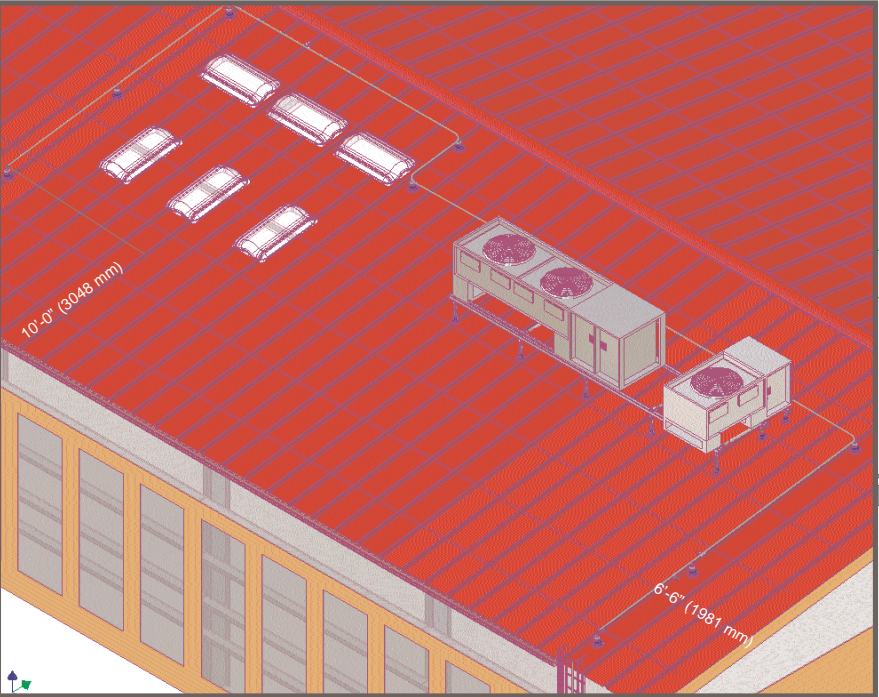
End Anchor Secured To Strut
(Roof Panel Not Shown)



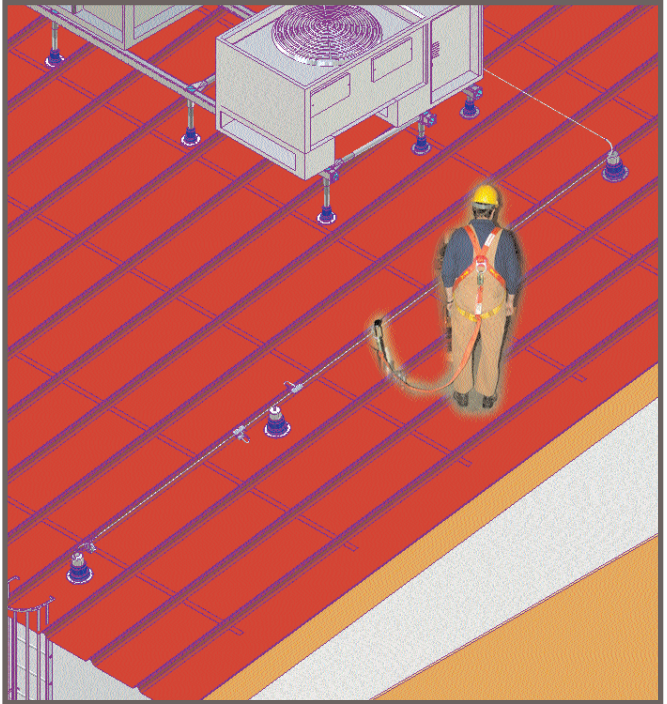
Corner Anchor Secured To Strut
(Roof Panel Not Shown)



Roof Panels Removed To Show Relationship Between
Anchors, Struts and Z-channels or C-channels.



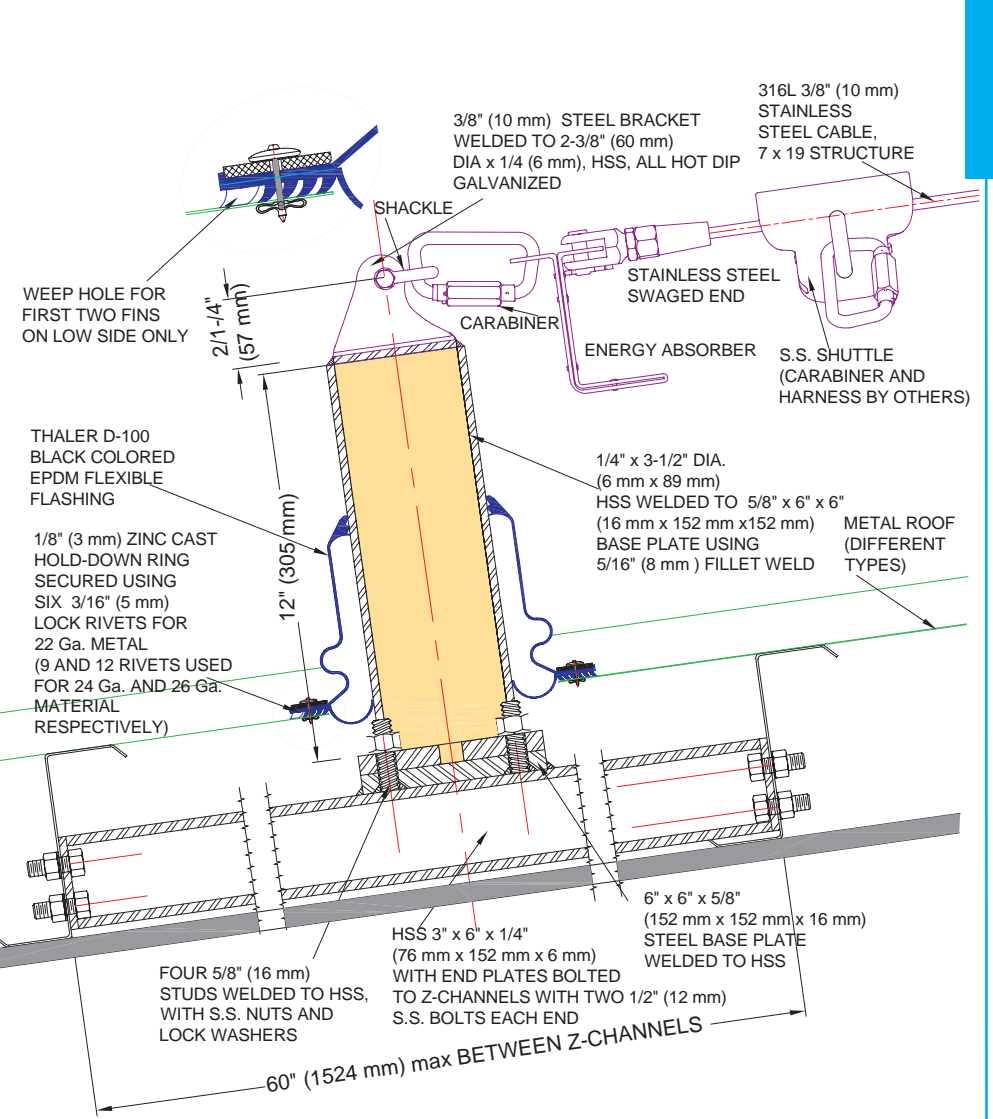
Easy Slider Horizontal Lifeline Shown Around Mechanical Equipment and
Skylights On Sloped Metal Roof



Horizontal Lifeline At Fall Arrest Side (Gable End) Of Building.
Access Ladder To Roof Is Shown Lower Left



Maintenance Personnel Working Around Skylights,
A Recognized Fall Hazard Area (Brittle Skylight Problem)



**D-190 EASY SLIDER HORIZONTAL LIFELINE
(End Anchor Post With Energy Absorber Illustrated)**

PATENT PENDING

SPECIFICATION (Short Form)

Horizontal lifeline system: Thaler D-190 EASY SLIDER, lifeline to [CSA-Z91-02][OSHA 1910.66, Subparts D and F] with:urethane insulated 1/4" x 3-1/2" (6 mm x 89 mm) dia. HSS posts, wall thickness 1/4" (6 mm), hot dipped galvanized ASTM 500, 12" (305 mm) high, welded and bolted to 5/8" x 6" x 6" (16 mm x 152 mm x 152 mm) 44W base plate welded to 3" x 6" x 1/4" (76 mm x 152 mm x 6 mm) HSS struts with end plates for connecting to [Z-channels][C-channels] using two 1/2" (12 mm) bolts both sides; s.s. fittings (swaged end, energy absorber, shuttle, end tensioner, intermediate brackets, corner pieces, and 316L cable 7 x 19 structure); D-100 EPDM Flexible Flashing, manufactured by thaler Metal Industries 1-800-387-7217 (Mississauga, Ontario, Canada) or 1-800-576-1200 (New Braunfels, TX), installed as per manufacturer's written instructions. Provide 20 year warranty against leaks, condensation and defects in materials and/or manufacture.

INSTALLATION

"Installation Instructions" are provided with every Thaler product. However, only Thaler approved installers are permitted to install the D-190 EASY SLIDER and the system must be certified by a professional engineer prior to initial use. Essentially, the D-190 Horizontal Lifeline is installed by fastening the anchor posts to the hollow steel structural struts which, in turn, are bolted to the structural roof Framing (Z or C-channels), fitting the metal roof panels with hole cutouts over posts, placing and sealing the flashing components using lock rivets, and finally installing the horizontal cable.

Recommended Layout: Maximum spacing between anchor posts is 30'-0" (9144 mm) Entry and exit anchor posts should be located within reach of any roof access ladder or hatch to ensure continuous protection. Horizontal lifelines should not be located any closer than 6'-6" (1981 mm) from any roof edge. Consult with Thaler for Layout recommendations.

Ordering and Availability: The D-100 EPDM Flexible Flashing is fabricated to order based upon metal roofing profile employed. **For flat/ribbed profiles products are available as a stock items. Allow 3-4 months lead time for corrugated panel profiles after checking availability of Thaler stock item.** Available throughout North America. Contact Thaler for list of distributors and current cost information.