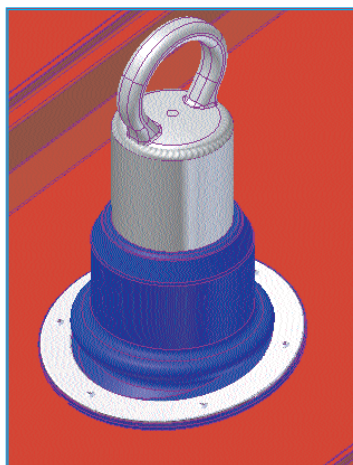
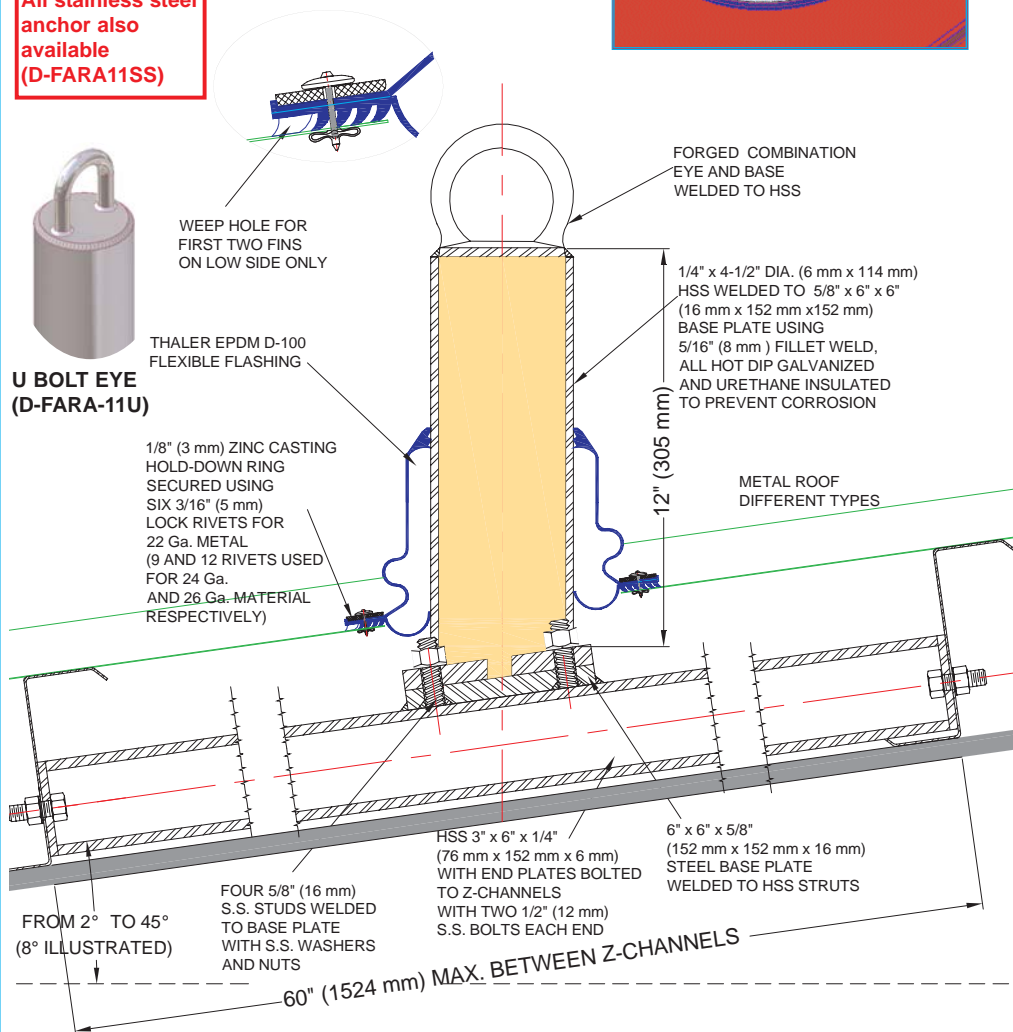


## D-FARA FALL ARREST ROOF ANCHORS FOR METAL ROOFS



All stainless steel anchor also available (D-FARA11SS)



### D-FARA-1 FALL ARREST ROOF ANCHOR FOR METAL ROOFS

PATENT PENDING

#### SPECIFICATION (Short Form) Continued

post (HSS) 1/4" (6 mm) wall thickness x 4-1/2" (114 mm) dia. x 12" (305 mm) high welded to 5/8" x 6" x 6" (16 mm x 152 mm x 152 mm) 44W base plate welded to 3" x 6" x 1/4" (76 mm x 152 mm x 6 mm) HSS struts with end plates for connecting to [Z-channels] [C-channels] using two 1/2" (12 mm) bolts both sides; D-100 EPDM Flexible Flashing; manufactured by Thaler Metal Industries, 1-800-387-7217 (Mississauga, Ontario, Canada) or 1-800-576-1200 (New Braunfels, TX), installed as per manufacturer's written instructions. Provide 20 year warranty against defects in materials and/or manufacture.

#### INSTALLATION

"Installation Instructions" are provided with every Thaler product. Essentially, D-FARA anchors are installed by fastening the mounting plate to the hollow steel structural struts which are bolted to structural roof framing (Z or C channels), fitting the metal roof panels with hole cutouts over the post, placing and sealing the flashing components using lock rivets.

**Ordering and Availability:** The D-100 EPDM Flexible Flashing is fabricated to order based upon metal roofing profile employed. For flat/ribbed profiles products are available as a stock items. Allow 3-4 months lead time for corrugated panel profiles after checking availability of Thaler stock items. Available throughout North America. Contact Thaler for list of distributors and current cost information.

#### DESCRIPTION

Thaler D-FARA fall arrest roof anchors consist of a urethane insulated hollow steel post (HSS) with base plate, bolted to hollow steel section structural struts. The struts are then bolted between and to the metal roof structural frame (Z-channels or C-channels). The top of the anchor is available with three different eye options:

1. With very high strength, *galvanized forged eye* (D-FARA-1).
2. With very high strength, *stainless steel forged eye* D-FARA-11. For all stainless steel specify D-FARA-11SS.
3. With high strength, *stainless steel U Bolt eye* D-FARA-11U. For all stainless steel specify D-FARA-11USS.

The D-100 EPDM Flexible Flashing designed specifically for sloped metal roofs completes the assembly. The flashing consists of an upper flashing boot with Triple Pressure Grommet Seal, a separate Base Seal, zinc casting hold-down ring, and a series of aluminum lock rivets with synthetic rubber washers under the heads.

**Prominent Features:** Patented Thaler D-100 EPDM flashing Base Seal eliminates condensation and condensation build-up from below and the EPDM Triple Pressure Grommet Seal eliminates flashing leaks from above (seals never, ever need caulking). The D-100 installation also accommodates thermal movement constantly taking place in the structure or metal roofing. Aesthetically pleasing. Ensures structural sufficiency. Maintenance free. See Thaler D-100 EPDM Flexible Flashing For Sloped Metal Roofs literature. Anchor integrity is backed by \$7,000,000.00 liability insurance.

#### RECOMMENDED USE

Suitable for all slopes from 2° to 45° roofs as fall arrest anchors for securing workers' lifelines.

#### APPLICABLE STANDARDS

Thaler FARA anchors conform to all Canadian and U.S. standards, provincial and state labour/safety codes and materials standards relating to anchor fabrication, window cleaning and other suspended maintenance operations. Conformance includes CSA, OML, ASME, ANSI, IWCA, OSHA, AISC, AWS, and other references.

#### WARRANTY

20 year warranty (lifetime on all stainless steel) against **leaks, condensation and defects** in materials and/or manufacture when installed in accordance with Thaler "Installation Instructions". Copy of Warranty Certificate available upon request.

#### MAINTENANCE

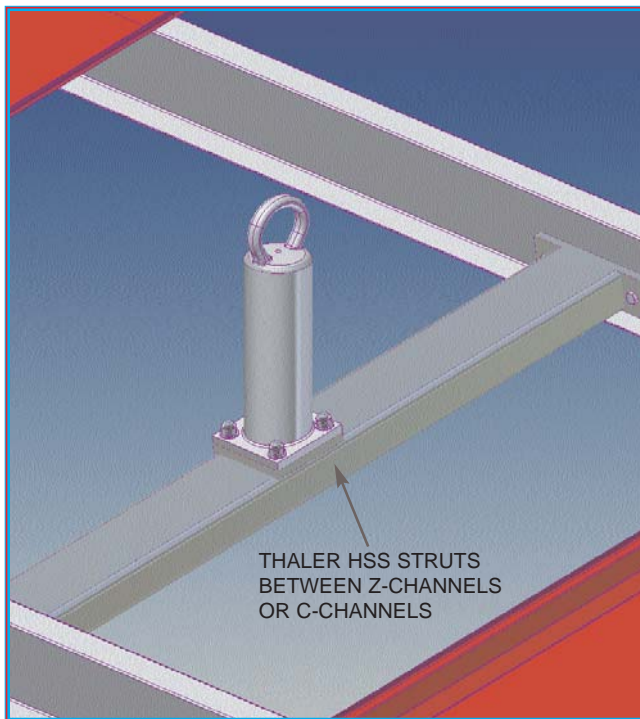
Regulatory authorities require anchors to be inspected annually with inspection data recorded in the Fall Protection Maintenance Log Book. Apart from this requirement, Thaler anchors require no maintenance.

#### PLANNING SERVICE

Thaler will provide layout drawings for fall arrest anchors in compliance with all applicable standards, safety regulations and local building codes.

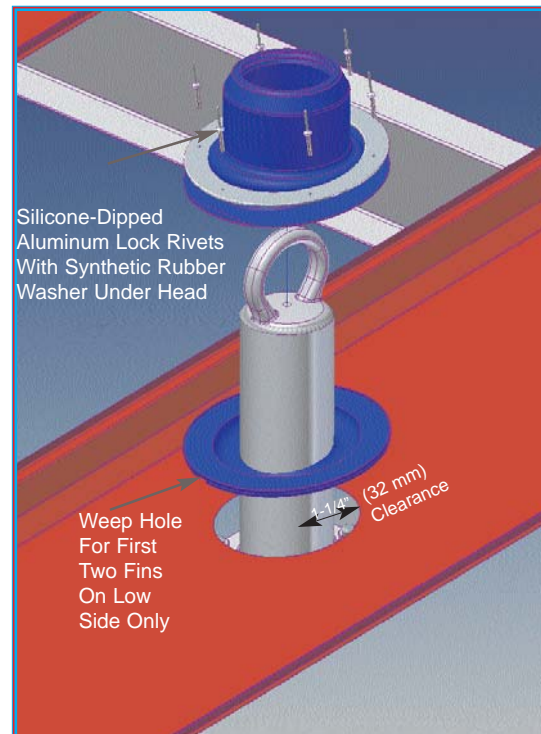
#### SPECIFICATION (Short Form)

**Fall arrest roof anchors:** Thaler [D-FARA-1 with galvanized forged 1018 steel eye] [D-FARA-11 with Type 304 stainless steel forged eye] [D-FARA-11UU with Type 304 stainless steel U bolt] roof anchor to [CSA Z91-M02] [OSHA 1910.66, Sub parts D and F] with: urethane insulated hollow hot dipped galvanized ASTM 500C  
Specification continued at left

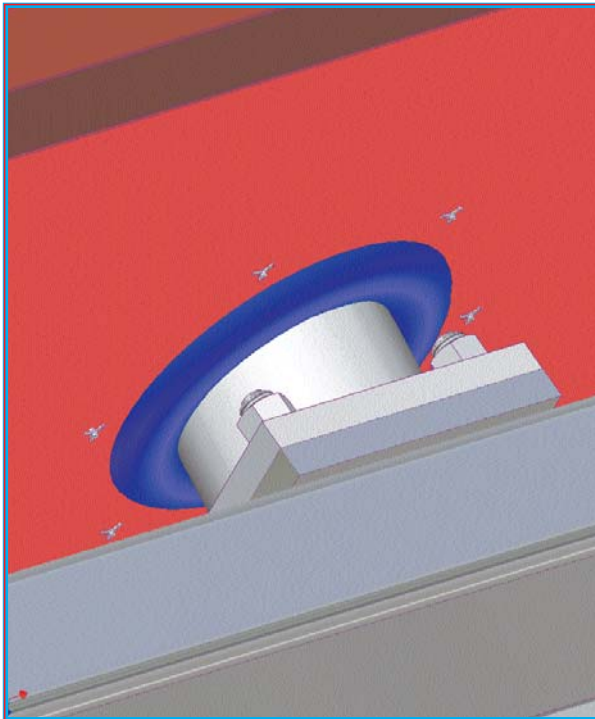


D-FARA-1 Fall Arrest Roof Anchor Showing  
HSS Bearing Struts Under Panel Without  
Roofing and EPDM Flexible Flashing

Note: 1-1/4" (32 mm) clearance between metal roof and support post accommodate expansion and contraction that is constantly taking place in metal structure or roof panels, from any direction (see illustration above, right).



Exploded View Showing Thaler D-100  
EPDM Flexible Flashing Assembly



Underside of Metal Roofing Showing  
Hold-Down Ring Lock Rivets



Completed D-FARA-1 Fall Arrest Roof  
Anchor Installation