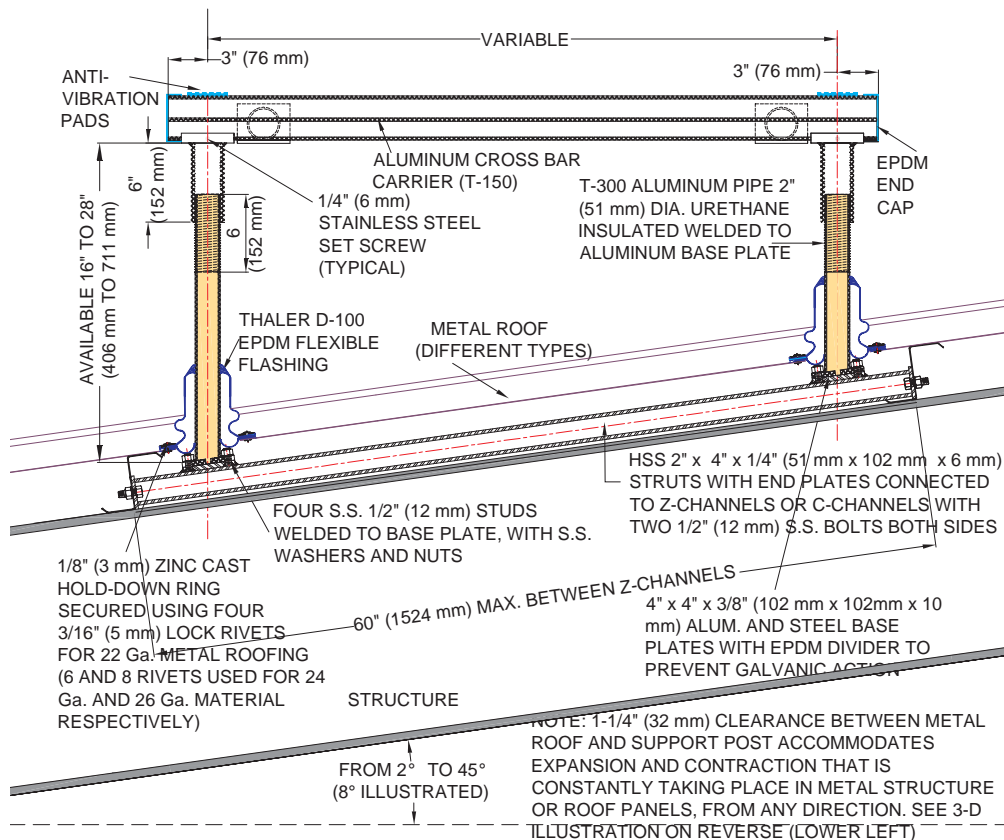


NOTE: SPACING FOR ALL UNIT SUPPORTS TO BE DETERMINED BY ENGINEER FOR SAFE LOADING



## D-MERS-900A AIR HANDLING UNIT SUPPORT FOR METAL ROOFS

PATENT PENDING

### INSTALLATION

"Installation Instructions" are provided with every Thaler product. Essentially, the Thaler D-MERS-900A Air Handling Unit Support is installed at required centres by fastening the aluminum mounting plate to the hollow steel structural struts which are bolted to the structural roof framing (Z or C channels), fitting the metal roof panels with hole cutouts over the post, placing and sealing the flashing components using lock rivets, installing the cross-bar carrier, and pipe section reinforcing ties.

**Cross-Bar Carrier Assembly:** Thread hollow aluminum upper supports onto lower support legs, install cross-bar carriers and pipe section reinforcing ties, and place air handling unit (by others) on carriers.

**Ordering and Availability:** The Thaler D-100 EPDM Flexible Flashing is fabricated to order based upon metal roofing profile employed. *For flat/ribbed profiles products are available as a stock items. Allow 3-4 months lead time for corrugated panel profiles after checking availability of Thaler stock items.* Available throughout North America. Contact Thaler for list of distributors and current cost information.

### ROOF SPECIALTIES

## D-MERS-900A AIR HANDLING UNIT ROOF SUPPORT FOR METAL ROOFS



### DESCRIPTION

Thaler D-MERS-900A Air Handling Unit Support for sloped metal roofs consists of two pairs of round, urethane insulated, hollow section 6061-T6 aluminum supports with threaded leg assembly for vertical adjustment and mounting plates bolted to hollow steel section structural struts. Struts are then bolted between and to the metal roof structural frame (Z-channels or C-channels by others). Cross-bar carriers with EPDM end caps and EPDM anti-vibration pads, two 1-1/2" (38 mm) diameter pipe sections to tie the two pairs of supports together for added strength, and D-100 EPDM Flexible Flashing designed specifically for sloped metal roofs. The flashing consists of an upper flashing boot with Triple Pressure Grommet Seal, a separate Base Seal, cast aluminum hold-down ring, and a series of aluminum lock rivets with synthetic rubber washers under the heads.

**Support Spacing:** To be determined by mechanical or electrical engineer for safe loading.

**Prominent Features:** Threaded leg assembly provides up to 4" (102 mm) vertical adjustment. Light weight, strong-as-steel and non corrosive. Patented Thaler D-100 EPDM flashing Base Seal eliminates condensation and condensation build-up from below and the EPDM Triple Pressure Grommet Seal eliminates flashing leaks from above (seals never, ever need caulking). D-100 installation also accommodates thermal movement constantly taking place in the structure or metal roofing. Aesthetically pleasing. Ensures structural sufficiency. Maintenance free. See Thaler D-100 EPDM Flashing For Sloped Metal Roofs literature.

### RECOMMENDED USE

Suitable for all slopes from 2° to 45° as an air handling unit support.

### WARRANTY

20 year warranty against **leaks, condensation and defects** in materials and/or manufacture when installed in accordance with Thaler "Installation Instructions". Copy of Warranty Certificate available upon request.

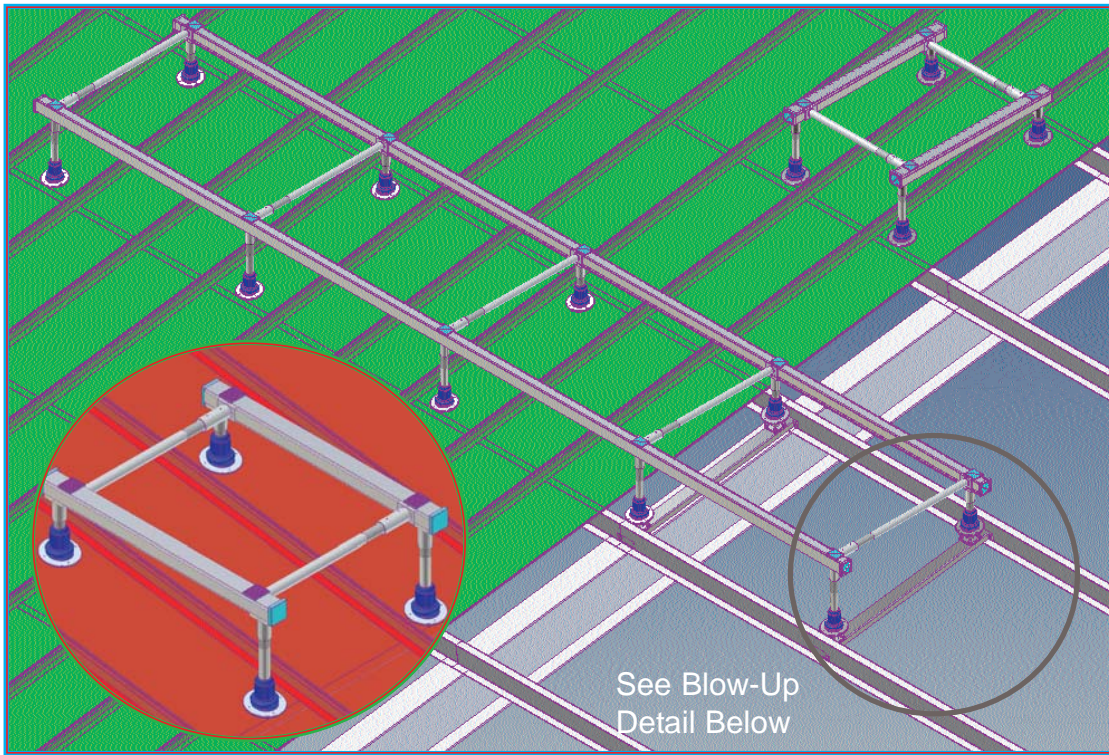
### MAINTENANCE

No maintenance required (maintenance free).

### SPECIFICATION (Short Form)

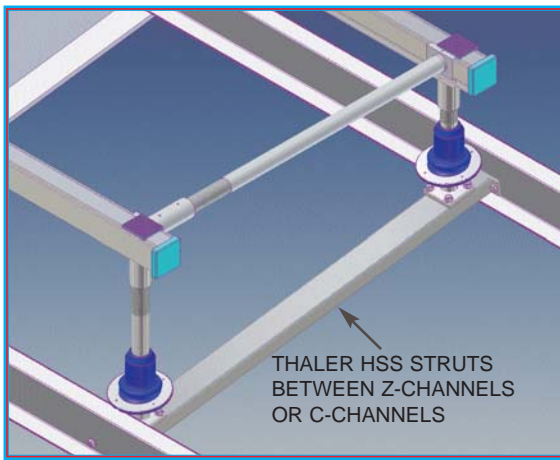
**Air handling unit supports:** Thaler D-MERS-900A, 16" to 28" (406 mm to 711 mm) high adjustable height 6061-T6 hollow aluminum mill finish, urethane insulated supports, 2" (51 mm) dia., having 4" x 4" x 3/8" (102 mm x 102 mm x 10 mm) alum. and steel base plates with EPDM divider welded to 2" x 4" x 1/4" (51 mm x 102 mm x 6 mm) HSS struts with end plates for connecting to [Z-channels] [C-channels] using two 1/2" s.s. (12 mm) bolts both sides; cross-bar carrier of length to suit application with EPDM end caps, EPDM anti-vibration pads and 1-1/2" (38 mm) dia. pipe section reinforcing ties; Thaler D-100 EPDM Flexible Flashing; manufactured by Thaler Metal Industries, 1-800-387-7217) Mississauga, Ontario, Canada) or 1-800-576-1200 (New Braunfels, TX), installed as per manufacturer's written instructions. Provide 20 year warranty against leaks, condensation and defects in materials and/or manufacture.





View Showing  
D-MERS-900A  
Air Handling Unit  
Support for Metal  
Roofs for Small A/C  
Units and Large A/C  
Units (see page F-18  
allowable uniform  
working load for cross  
bar carrier T-150)

See Blow-Up  
Detail Below



THALER HSS STRUTS  
BETWEEN Z-CHANNELS  
OR C-CHANNELS

D-MERS-900A Showing HSS Bearing Struts Under  
Panel Without Roofing Shown



Silicone-Dipped  
Aluminum Lock Rivets  
With Synthetic Rubber  
Washer Under Head

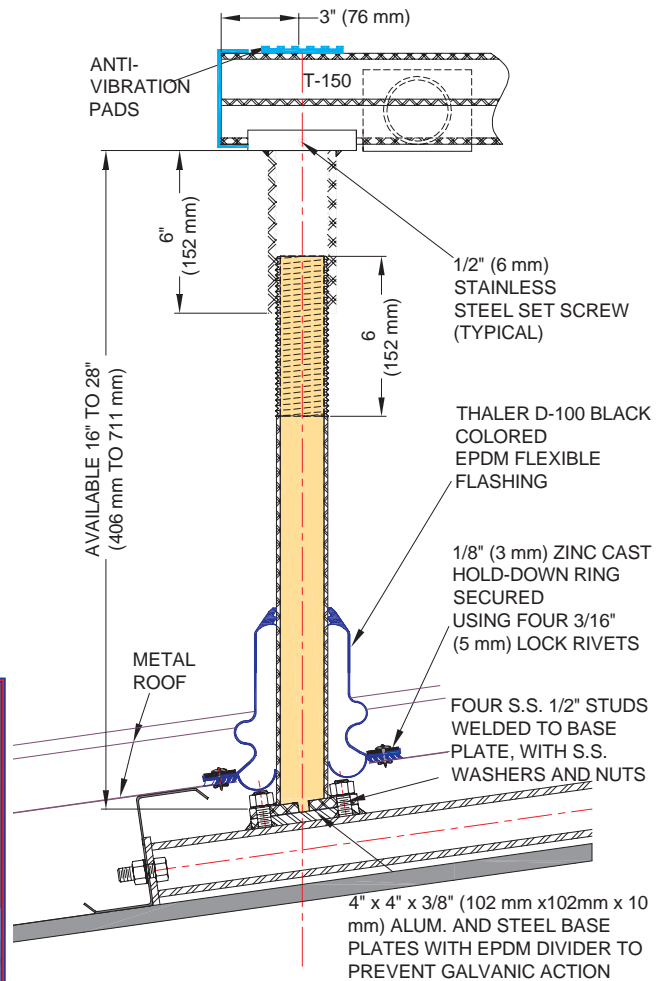
Weep Hole  
For First  
Two Fins  
On Low  
Side Only

1-1/4"  
Clearance



Underside of Roof Support  
Post Showing Hold-Down  
Ring Lock Rivets

Exploded View Showing Thaler D-100  
EPDM Flexible Flashing Assembly



**LARGE SCALE SECTION DETAIL AT  
SUPPORT POST**